

Product datasheet for **TP310761M**

CSTF3 (NM_001326) Human Recombinant Protein

Product data:

Product Type:	Recombinant Proteins
Description:	Recombinant protein of human cleavage stimulation factor, 3' pre-RNA, subunit 3, 77kDa (CSTF3), transcript variant 1, 100 µg
Species:	Human
Expression Host:	HEK293T
Expression cDNA	>RC210761 protein sequence
Clone or AA Sequence:	Red =Cloning site Green =Tags(s)

MSGDGATEQAAEYVPEKVKKAEEKLEENPYDLDAWSILIREAQNPIDKARKTYERLVAQFPSSGRFWKL
YIEAEIKAKNYDKVEKLFQRCLMKVLHIDLWKCYLSYVRETKGKLPYKEKMAQAYDFALDKIGMEIMSY
QIWWDYINFLKGVEAVGSYAENQRITAVRRVYQRGCVNPMINIEQLWRDYNKYEEGINIHAKKMIEDRS
RDYMNARRVAKEYETVMKGLDRNAPSVPPQNTQPQEAQQVDMWKYIQWEKSNPLRTEDQTLITKRVMFAY
EQCLLVLGHPDIWYEEAAQYLEQSSKLLAEKGMNNAKLFSDAANIYERAISTLLKKNMLLYFAYADYE
ESRMKYEKVHSIYNRLLAIEDIDPTLVYIQYMKFARRAEGIKSGRMIFKKAREDRTRRHVVYTAALMEY
YCSKDKSVAFKIFELGLKKGDIPEYVLAYIDYLSHLNEDNTRVLFERVLTSGLPPEKSGEIWARFLA
FESNIGDLASILKVEKRRFTAFKEEYEGKETALLVDRYKFMFDLYPCSASELKALGYKDVSRAKLAAIIPD
PVVAPSIVPVLKDEVDRKPEYKPDTPQQMIPFQPRHLAPPGLHPVPGGVFPVPPAAVLMKLLPPPICFQ
GPFVQVDELMEIFRRCKIPNTVEEAVRIITGGAPELAVEGNGPVESNAVLTKAVKRPNEDSDEDEEKGA
VPPVHDIYRARQQKRIR

TRTRPLEQKLISEEDLAANDILDYKDDDDKV

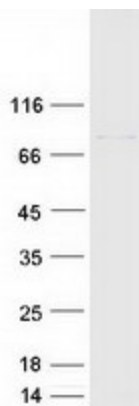
Tag:	C-Myc/DDK
Predicted MW:	82.7 kDa
Concentration:	>0.05 µg/µL as determined by microplate BCA method
Purity:	> 80% as determined by SDS-PAGE and Coomassie blue staining
Buffer:	25 mM Tris-HCl, 100 mM glycine, pH 7.3, 10% glycerol
Preparation:	Recombinant protein was captured through anti-DDK affinity column followed by conventional chromatography steps.
Note:	For testing in cell culture applications, please filter before use. Note that you may experience some loss of protein during the filtration process.



[View online »](#)

Storage:	Store at -80°C.
Stability:	Stable for 12 months from the date of receipt of the product under proper storage and handling conditions. Avoid repeated freeze-thaw cycles.
RefSeq:	NP_001317
Locus ID:	1479
UniProt ID:	Q12996
RefSeq Size:	2846
Cytogenetics:	11p13
RefSeq ORF:	2151
Synonyms:	CSTF-77
Summary:	The protein encoded by this gene is one of three (including CSTF1 and CSTF2) cleavage stimulation factors that combine to form the cleavage stimulation factor complex (CSTF). This complex is involved in the polyadenylation and 3' end cleavage of pre-mRNAs. The encoded protein functions as a homodimer and interacts directly with both CSTF1 and CSTF2 in the CSTF complex. Alternative splicing results in multiple transcript variants encoding different isoforms. [provided by RefSeq, Jul 2008]

Product images:



Coomassie blue staining of purified CSTF3 protein (Cat# [TP310761]). The protein was produced from HEK293T cells transfected with CSTF3 cDNA clone (Cat# [RC210761]) using MegaTran 2.0 (Cat# [TT210002]).