

## Product datasheet for **TP310749M**

### MAPRE1 (NM\_012325) Human Recombinant Protein

#### Product data:

Product Type:	Recombinant Proteins
Description:	Recombinant protein of human microtubule-associated protein, RP/EB family, member 1 (MAPRE1), 100 µg
Species:	Human
Expression Host:	HEK293T
Expression cDNA Clone or AA Sequence:	>RC210749 protein sequence <b>Red</b> =Cloning site <b>Green</b> =Tags(s)

MAVNVYSTSVTSDNLSRHDMLAWINESLQLNLTKIEQLCSGAAYCQFMDMLFPGSIALKKVKFQAKLEHE  
YIQNFKILQAGFKRMGVDKIIPVDKLVKGFQDNFEFVQWFKKFFDANYDGKDYDPVAARQGQETAVAPS  
LVAPALNPKPKPLTSSSAAPQRPISRTQRTAAAPKAGPGVVRKNPGVGNDDAAELMQQVNVLKLTVEDL  
EKERDFYFGKLRNIELICQENEGENDPVLQRIVDILYATDEGFVIPDEGGPQEEQEEY

**TRTRPLEQKLISEEDLAANDILDYKDDDDKV**

Tag:	C-Myc/DDK
Predicted MW:	29.8 kDa
Concentration:	>0.05 µg/µL as determined by microplate BCA method
Purity:	> 80% as determined by SDS-PAGE and Coomassie blue staining
Buffer:	25 mM Tris-HCl, 100 mM glycine, pH 7.3, 10% glycerol
Preparation:	Recombinant protein was captured through anti-DDK affinity column followed by conventional chromatography steps.
Note:	For testing in cell culture applications, please filter before use. Note that you may experience some loss of protein during the filtration process.
Storage:	Store at -80°C.
Stability:	Stable for 12 months from the date of receipt of the product under proper storage and handling conditions. Avoid repeated freeze-thaw cycles.
RefSeq:	<u><a href="#">NP_036457</a></u>
Locus ID:	22919



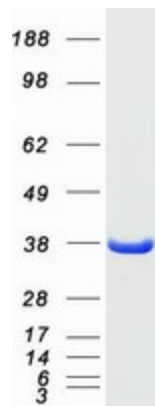
[View online »](#)

UniProt ID: [Q15691](#)  
RefSeq Size: 2640  
Cytogenetics: 20q11.21  
RefSeq ORF: 804  
Synonyms: EB1

**Summary:** The protein encoded by this gene was first identified by its binding to the APC protein which is often mutated in familial and sporadic forms of colorectal cancer. This protein localizes to microtubules, especially the growing ends, in interphase cells. During mitosis, the protein is associated with the centrosomes and spindle microtubules. The protein also associates with components of the dynactin complex and the intermediate chain of cytoplasmic dynein. Because of these associations, it is thought that this protein is involved in the regulation of microtubule structures and chromosome stability. This gene is a member of the RP/EB family. [provided by RefSeq, Jul 2008]

**Protein Families:** Druggable Genome

### Product images:



Coomassie blue staining of purified MAPRE1 protein (Cat# [TP310749]). The protein was produced from HEK293T cells transfected with MAPRE1 cDNA clone (Cat# [RC210749]) using MegaTran 2.0 (Cat# [TT210002]).