

## Product datasheet for **TP310746M**

### **TOMM20 (NM\_014765) Human Recombinant Protein**

#### **Product data:**

<b>Product Type:</b>	Recombinant Proteins
<b>Description:</b>	Recombinant protein of human translocase of outer mitochondrial membrane 20 homolog (yeast) (TOMM20), nuclear gene encoding mitochondrial protein, 100 µg
<b>Species:</b>	Human
<b>Expression Host:</b>	HEK293T
<b>Expression cDNA Clone or AA Sequence:</b>	>RC210746 protein sequence <b>Red</b> =Cloning site <b>Green</b> =Tags(s)  MVGRNSAIAAGVCGALFIGYCIYFDRKRRSDPNFKNRLRERRKKQKLAKERAGLSKLPDLKDAEAVQKFF LEEIQLGEELLAQGEYEKGV DHLTNAIAVCGQPQQLLQVLQQTLP PPVFQMLLTKLPTISQRIVSAQSLA EDDVE  <b>TRTRPLEQKLISEEDLAANDILDYKDDDDKV</b>
<b>Tag:</b>	C-Myc/DDK
<b>Predicted MW:</b>	16.1 kDa
<b>Concentration:</b>	>0.05 µg/µL as determined by microplate BCA method
<b>Purity:</b>	> 80% as determined by SDS-PAGE and Coomassie blue staining
<b>Buffer:</b>	25 mM Tris-HCl, 100 mM glycine, pH 7.3, 10% glycerol
<b>Preparation:</b>	Recombinant protein was captured through anti-DDK affinity column followed by conventional chromatography steps.
<b>Note:</b>	For testing in cell culture applications, please filter before use. Note that you may experience some loss of protein during the filtration process.
<b>Storage:</b>	Store at -80°C.
<b>Stability:</b>	Stable for 12 months from the date of receipt of the product under proper storage and handling conditions. Avoid repeated freeze-thaw cycles.
<b>RefSeq:</b>	<u><a href="#">NP_055580</a></u>
<b>Locus ID:</b>	9804
<b>UniProt ID:</b>	<u><a href="#">Q15388</a></u> , <u><a href="#">A0A024R3W2</a></u>



[View online »](#)

RefSeq Size: 3407

Cytogenetics: 1q42.3

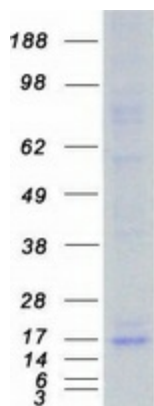
RefSeq ORF: 435

Synonyms: MAS20; MOM19; TOM20

**Summary:** Central component of the receptor complex responsible for the recognition and translocation of cytosolically synthesized mitochondrial preproteins. Together with TOM22 functions as the transit peptide receptor at the surface of the mitochondrion outer membrane and facilitates the movement of preproteins into the TOM40 translocation pore (By similarity). Required for the translocation across the mitochondrial outer membrane of cytochrome P450 monooxygenases.[UniProtKB/Swiss-Prot Function]

**Protein Families:** Druggable Genome, Transmembrane

### Product images:



Coomassie blue staining of purified TOMM20 protein (Cat# [TP310746]). The protein was produced from HEK293T cells transfected with TOMM20 cDNA clone (Cat# [RC210746]) using MegaTran 2.0 (Cat# [TT210002]).