

## Product datasheet for **TP310745M**

### SPCS2 (NM\_014752) Human Recombinant Protein

#### Product data:

Product Type:	Recombinant Proteins
Description:	Recombinant protein of human signal peptidase complex subunit 2 homolog (S. cerevisiae) (SPCS2), 100 µg
Species:	Human
Expression Host:	HEK293T
Expression cDNA	>RC210745 protein sequence
Clone or AA Sequence:	Red=Cloning site Green=Tags(s)

MAAAAVQGGRSGGSGGCSGAGGASNCGTGSGRSGLLDKWKIDDKPKIDKWDGSAVKNSLDDSAKKVLLLE  
KYKYVENFGLIDGRLTICTISCFFAIVALIWDYMHPPFESKPVLALCVISYFVMMGILTIYTSYKEKSIF  
LVAHRKDPTGMDPDDIWQLSSSLKRFDDKYTLKLTIFISGRTKQQREAEFTKSIKFFDHSGTLVMDAYEP  
EISRLHDSLAIERKIK

TRTRPLEQKLISEEDLAANDILDYKDDDDKV

Tag:	C-Myc/DDK
Predicted MW:	24.8 kDa
Concentration:	>0.05 µg/µL as determined by microplate BCA method
Purity:	> 80% as determined by SDS-PAGE and Coomassie blue staining
Buffer:	25 mM Tris-HCl, 100 mM glycine, pH 7.3, 10% glycerol
Preparation:	Recombinant protein was captured through anti-DDK affinity column followed by conventional chromatography steps.
Note:	For testing in cell culture applications, please filter before use. Note that you may experience some loss of protein during the filtration process.
Storage:	Store at -80°C.
Stability:	Stable for 12 months from the date of receipt of the product under proper storage and handling conditions. Avoid repeated freeze-thaw cycles.
RefSeq:	<a href="#">NP_055567</a>
Locus ID:	9789



[View online »](#)

UniProt ID: [Q15005](#)

RefSeq Size: 2731

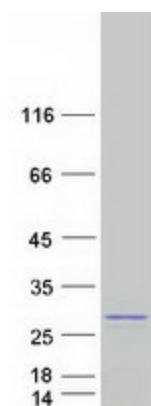
Cytogenetics: 11q13.4

RefSeq ORF: 678

**Summary:** Component of the microsomal signal peptidase complex which removes signal peptides from nascent proteins as they are translocated into the lumen of the endoplasmic reticulum. [UniProtKB/Swiss-Prot Function]

**Protein Families:** Protease, Transmembrane

### Product images:



Coomassie blue staining of purified SPCS2 protein (Cat# [TP310745]). The protein was produced from HEK293T cells transfected with SPCS2 cDNA clone (Cat# [RC210745]) using MegaTran 2.0 (Cat# [TT210002]).