

## Product datasheet for TP310744L

### SMU1 (NM\_018225) Human Recombinant Protein

#### Product data:

Product Type:	Recombinant Proteins
Description:	Recombinant protein of human smu-1 suppressor of mec-8 and unc-52 homolog (C. elegans) (SMU1), 1 mg
Species:	Human
Expression Host:	HEK293T
Expression cDNA	>RC210744 protein sequence
Clone or AA Sequence:	Red=Cloning site Green=Tags(s)

MSIEIESSDVIRLIMQYLKENS LHRALATLQEETT VSLNTVDSIESFVADINSGHWDTVLQVIQSLKLPD  
KTLIDLQEYQVWLELIELRELGAARSLRQTDP MIMLKQTQPERYIHLENLLARSYFDPREAYPDGSSKEK  
RRAAIAQALAGEVSVVPPSRLMALLGQALKWQQHQGLLPPGMTIDLFRGKA AVKDVEEEKFPTQLSRHIK  
FGQKSHVECARFSPDGQYLVTGSDGFIEVWNFTTGKIRKDLKYQAQDNFMMMDDAVLCMCF SRDTEMLA  
TGAQDGKIKVWKIQSGQCLRRFERAHSKGV TCLSFSKDSSQILSASFDTIRIHGLKSGKTLKEFRGHSS  
FVNEATFTQDGHYIISASSDGTVKIWNMKTTECSNTFKSLGSTAGTDITVNSVILLPKNPEHFVVCNRSN  
TVVIMNMQGQIVRSFSSGKREGGDFVCCALSPRGEWIYCVGEDFVLYCFSTVTGKLERLT LVHEKDVIGI  
AHHPHQNLIATYSEDALLKLWKP

TRTRPLEQKLI SEEDLAANDILDYKDDDDKV

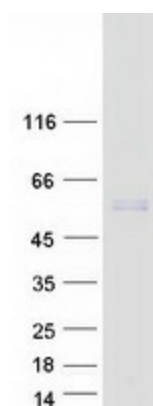
Tag:	C-Myc/DDK
Predicted MW:	57.4 kDa
Concentration:	>0.05 µg/µL as determined by microplate BCA method
Purity:	> 80% as determined by SDS-PAGE and Coomassie blue staining
Buffer:	25 mM Tris-HCl, 100 mM glycine, pH 7.3, 10% glycerol
Preparation:	Recombinant protein was captured through anti-DDK affinity column followed by conventional chromatography steps.
Note:	For testing in cell culture applications, please filter before use. Note that you may experience some loss of protein during the filtration process.
Storage:	Store at -80°C.



[View online »](#)

<b>Stability:</b>	Stable for 12 months from the date of receipt of the product under proper storage and handling conditions. Avoid repeated freeze-thaw cycles.
<b>RefSeq:</b>	<a href="#">NP_060695</a>
<b>Locus ID:</b>	55234
<b>UniProt ID:</b>	<a href="#">Q2TAY7</a>
<b>RefSeq Size:</b>	7091
<b>Cytogenetics:</b>	9p21.1
<b>RefSeq ORF:</b>	1539
<b>Synonyms:</b>	BWD; fSAP57; SMU-1
<b>Summary:</b>	Involved in pre-mRNA splicing as a component of the spliceosome (PubMed:28781166). Regulates alternative splicing of the HSPG2 pre-mRNA (By similarity). Required for normal accumulation of IK (PubMed:24945353). Required for normal mitotic spindle assembly and normal progress through mitosis (By similarity).[UniProtKB/Swiss-Prot Function]

### Product images:



Coomassie blue staining of purified SMU1 protein (Cat# [TP310744]). The protein was produced from HEK293T cells transfected with SMU1 cDNA clone (Cat# [RC210744]) using MegaTran 2.0 (Cat# [TT210002]).