

Product datasheet for **TP310744**

SMU1 (NM_018225) Human Recombinant Protein

Product data:

Product Type:	Recombinant Proteins
Description:	Recombinant protein of human smu-1 suppressor of mec-8 and unc-52 homolog (C. elegans) (SMU1), 20 µg
Species:	Human
Expression Host:	HEK293T
Expression cDNA	>RC210744 protein sequence
Clone or AA Sequence:	Red=Cloning site Green=Tags(s)

MSIEIESSDVIRLIMQYLKENS LHRALATLQEETT VSLNTVDSIESFVADINSGHWDTVLQVIQSLKLPD
KTLIDLQEYQVWLELIELRELGAARSLRQTDP MIMLKQTQPERYIHLENLLARSYFDPREAYPDGSSKEK
RRAAIAQALAGEVSVVPPSRLMALLGQALKWQQHQGLLPPGMTIDLFRGKA AVKDVEEEKFPTQLSRHIK
FGQKSHVECARFSPDGQYLVTGSDGFIEVWNFTTGKIRKDLKYQAQDNFMMMDDAVLCMCF SRDTEMLA
TGAQDGKIKVWKIQSGQCLRRFERAHSKGV TCLSFSKDSSQILSASFDQTIRIHGLKSGKTLKEFRGHSS
FVNEATFTQDGHYIISASSDGTVKIWNMKTTECSNTFKSLGSTAGTDITVNSVILLPKNPEHFVVCNRSN
TVVIMNMQGQIVRSFSSGKREGGDFVCCALSPRGEWIYCVGEDFVLYCFSTVTGKLERLT VHEKDVIGI
AHHPHQNLIATYSEDALLKLWKP

TRTRPLEQKLI SEEDLAANDILDYKDDDDKV

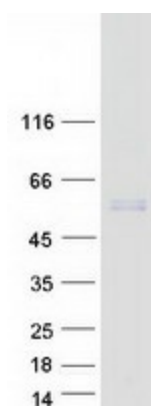
Tag:	C-Myc/DDK
Predicted MW:	57.4 kDa
Concentration:	>0.05 µg/µL as determined by microplate BCA method
Purity:	> 80% as determined by SDS-PAGE and Coomassie blue staining
Buffer:	25 mM Tris-HCl, 100 mM glycine, pH 7.3, 10% glycerol
Preparation:	Recombinant protein was captured through anti-DDK affinity column followed by conventional chromatography steps.
Note:	For testing in cell culture applications, please filter before use. Note that you may experience some loss of protein during the filtration process.
Storage:	Store at -80°C.



[View online »](#)

Stability:	Stable for 12 months from the date of receipt of the product under proper storage and handling conditions. Avoid repeated freeze-thaw cycles.
RefSeq:	NP_060695
Locus ID:	55234
UniProt ID:	Q2TAY7 , A0MNN4
RefSeq Size:	7091
Cytogenetics:	9p21.1
RefSeq ORF:	1539
Synonyms:	BWD; fSAP57; SMU-1
Summary:	Involved in pre-mRNA splicing as a component of the spliceosome (PubMed:28781166). Regulates alternative splicing of the HSPG2 pre-mRNA (By similarity). Required for normal accumulation of IK (PubMed:24945353). Required for normal mitotic spindle assembly and normal progress through mitosis (By similarity).[UniProtKB/Swiss-Prot Function]

Product images:



Coomassie blue staining of purified SMU1 protein (Cat# TP310744). The protein was produced from HEK293T cells transfected with SMU1 cDNA clone (Cat# [RC210744]) using MegaTran 2.0 (Cat# [TT210002]).