

Product datasheet for TP310736

LOC91561 (NM_001080822) Human Recombinant Protein

Product data:

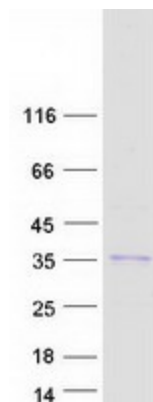
Product Type:	Recombinant Proteins
Description:	Recombinant protein of human hCG1992539 (LOC91561), 20 µg
Species:	Human
Expression Host:	HEK293T
Expression cDNA	>RC210736 protein sequence
Clone or AA	Red=Cloning site Green=Tags(s)
Sequence:	<p>MADDAGAAGGPGGPGGPGMGNRGGFRGGFGSGIRGRGRGRGRGRGRGRGARGGKAEDKEWMPVTKLGRVL KDMKIKSLEEIYLFSLPIKESEIIDFFLGASLKDEVLKIMPVQKQTRAGQRTRFKAFVAIGDYNGHVGLG VKCSKEVATAIRGAILAKLSIVPVRRGYWGNKIGKPHTVPCKVTGRCGSVLVRLIPAPRGTGIVSAPVP KKLLMMAGIDDCYTSARGCTATLGNFAKATFDAIFKTSYLTPLWKETVFTKSPYQEFTDHLVKHTHRV SVQRTQAPAVATT</p> <p>TRTRPLEQKLISEEDLAANDILDYKDDDDKV</p>
Tag:	C-Myc/DDK
Predicted MW:	31.32
Concentration:	>0.05 µg/µL as determined by microplate BCA method
Purity:	> 80% as determined by SDS-PAGE and Coomassie blue staining
Buffer:	25 mM Tris-HCl, 100 mM glycine, pH 7.3, 10% glycerol
Preparation:	Recombinant protein was captured through anti-DDK affinity column followed by conventional chromatography steps.
Note:	For testing in cell culture applications, please filter before use. Note that you may experience some loss of protein during the filtration process.
Storage:	Store at -80°C.
Stability:	Stable for 12 months from the date of receipt of the product under proper storage and handling conditions. Avoid repeated freeze-thaw cycles.
Locus ID:	91561
RefSeq Size:	677



[View online »](#)

Cytogenetics: 11p15.1
 RefSeq ORF: 879
 Synonyms: RPS2_17_1125

Product images:



Coomassie blue staining of purified LOC91561 protein (Cat# TP310736). The protein was produced from HEK293T cells transfected with LOC91561 cDNA clone (Cat# [RC210736]) using MegaTran 2.0 (Cat# [TT210002]).