

Product datasheet for **TP310729L**

SERP1 (NM_014445) Human Recombinant Protein

Product data:

Product Type:	Recombinant Proteins
Description:	Recombinant protein of human stress-associated endoplasmic reticulum protein 1 (SERP1), 1 mg
Species:	Human
Expression Host:	HEK293T
Expression cDNA Clone or AA Sequence:	>RC210729 protein sequence Red =Cloning site Green =Tags(s)
	MVAKQRIRMANEKHSKNITQRGNVAKTSRNASPEEKASVGPWLLALFIFVCGSAIFQIIQSIRMGM
	TRTRPLEQKLISEEDLAANDILDYKDDDDKV
Tag:	C-Myc/DDK
Predicted MW:	7.2 kDa
Concentration:	>0.05 µg/µL as determined by microplate BCA method
Purity:	> 80% as determined by SDS-PAGE and Coomassie blue staining
Buffer:	25 mM Tris-HCl, 100 mM glycine, pH 7.3, 10% glycerol
Preparation:	Recombinant protein was captured through anti-DDK affinity column followed by conventional chromatography steps.
Note:	For testing in cell culture applications, please filter before use. Note that you may experience some loss of protein during the filtration process.
Storage:	Store at -80°C.
Stability:	Stable for 12 months from the date of receipt of the product under proper storage and handling conditions. Avoid repeated freeze-thaw cycles.
RefSeq:	NP_055260
Locus ID:	27230
UniProt ID:	Q9Y6X1
RefSeq Size:	3181
Cytogenetics:	3q25.1



[View online »](#)

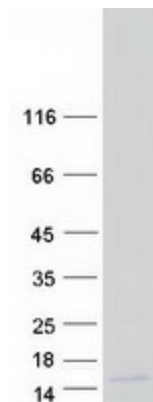
RefSeq ORF: 198

Synonyms: RAMP4

Summary: Interacts with target proteins during their translocation into the lumen of the endoplasmic reticulum. Protects unfolded target proteins against degradation during ER stress. May facilitate glycosylation of target proteins after termination of ER stress. May modulate the use of N-glycosylation sites on target proteins (By similarity).[UniProtKB/Swiss-Prot Function]

Protein Families: Transmembrane

Product images:



Coomassie blue staining of purified SERP1 protein (Cat# [TP310729]). The protein was produced from HEK293T cells transfected with SERP1 cDNA clone (Cat# [RC210729]) using MegaTran 2.0 (Cat# [TT210002]).