

Product datasheet for **TP310719M**

PRPSAP2 (NM_002767) Human Recombinant Protein

Product data:

Product Type:	Recombinant Proteins
Description:	Recombinant protein of human phosphoribosyl pyrophosphate synthetase-associated protein 2 (PRPSAP2), 100 µg
Species:	Human
Expression Host:	HEK293T
Expression cDNA Clone or AA Sequence:	>RC210719 protein sequence Red =Cloning site Green =Tags(s)

MFCVTPPELETKMNITKGGVLVFSANSNSSCMELSKKIAERLGVEMGKVQVYQEPNRETRVQIQESVRGK
DVFIIQTVSKDVNTTIMELLIMVYACKTSCAKSIIGVIPYFPYSKQCKMRKRGSIVSKLLASMMCKAGLT
HLITMDLHQKEIQGFFNIPVDNLRASPFLQYIQEEIPDYRNAVIVAKSPASAKRAQSAERLRLGIAVI
HGQAQDAESDLVDGRHSPPMVRSVAIIHPSLEIPMLIPKEKPPITVVGDVGGRIAIIVDDIIDDVDSFLA
AAETLKERGAYKIFVMATHGLLSSDAPRRIEESAIDEVWVTNTIPHEVQKLQCPKIKTVDISMILSEAIR
RIHNGESMSYLFRNIGLDD

TRTRPLEQKLISEEDLAANDILDYKDDDDKV

Tag:	C-Myc/DDK
Predicted MW:	40.7 kDa
Concentration:	>0.05 µg/µL as determined by microplate BCA method
Purity:	> 80% as determined by SDS-PAGE and Coomassie blue staining
Buffer:	25 mM Tris-HCl, 100 mM glycine, pH 7.3, 10% glycerol
Preparation:	Recombinant protein was captured through anti-DDK affinity column followed by conventional chromatography steps.
Note:	For testing in cell culture applications, please filter before use. Note that you may experience some loss of protein during the filtration process.
Storage:	Store at -80°C.
Stability:	Stable for 12 months from the date of receipt of the product under proper storage and handling conditions. Avoid repeated freeze-thaw cycles.
RefSeq:	NP_002758



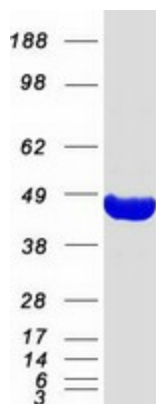
[View online »](#)

Locus ID: 5636
UniProt ID: [O60256](#), [A0A024QYY3](#)
RefSeq Size: 2021
Cytogenetics: 17p11.2
RefSeq ORF: 1107
Synonyms: PAP41

Summary: This gene encodes a protein that associates with the enzyme phosphoribosylpyrophosphate synthetase (PRS). PRS catalyzes the formation of phosphoribosylpyrophosphate which is a substrate for synthesis of purine and pyrimidine nucleotides, histidine, tryptophan and NAD. PRS exists as a complex with two catalytic subunits and two associated subunits. This gene encodes a non-catalytic associated subunit of PRS. Alternate splicing results in multiple transcript variants. [provided by RefSeq, Sep 2011]

Protein Families: Druggable Genome

Product images:



Coomassie blue staining of purified PRPSAP2 protein (Cat# [TP310719]). The protein was produced from HEK293T cells transfected with PRPSAP2 cDNA clone (Cat# [RC210719]) using MegaTran 2.0 (Cat# [TT210002]).