

## Product datasheet for TP310717M

### Proteasome 20S alpha 5 (PSMA5) (NM\_002790) Human Recombinant Protein

#### Product data:

Product Type:	Recombinant Proteins
Description:	Recombinant protein of human proteasome (prosome, macropain) subunit, alpha type, 5 (PSMA5), 100 µg
Species:	Human
Expression Host:	HEK293T
Expression cDNA Clone or AA Sequence:	>RC210717 representing NM_002790 Red=Cloning site Green=Tags(s)
	MFLTRSEYDRGVNTFSPEGRLFQVEYAIEAIKLGSTAIGIQTSEGVCLAVEKRITSPLMEPSSIEKIVEI DAHIGCAMSLIADAKTLIDKARVETQNHWFYNETMTVESVTQAVSNLALQFGEEDADPGAMSRPFGVA LLFGGVDEKGPQLFHMDPSGTFVQCDARAIGSASEGAQSSLQEVYHKSMTLKEAIKSSLIILKQVMEEKL NATNIELATVQPGQNFHMFTKEELEEVIKDI
	TRTRPLEQKLISEEDLAANDILDYKDDDDKV
Tag:	C-Myc/DDK
Predicted MW:	26.2 kDa
Concentration:	>0.05 µg/µL as determined by microplate BCA method
Purity:	> 80% as determined by SDS-PAGE and Coomassie blue staining
Buffer:	25 mM Tris-HCl, 100 mM glycine, pH 7.3, 10% glycerol
Preparation:	Recombinant protein was captured through anti-DDK affinity column followed by conventional chromatography steps.
Note:	For testing in cell culture applications, please filter before use. Note that you may experience some loss of protein during the filtration process.
Storage:	Store at -80°C.
Stability:	Stable for 12 months from the date of receipt of the product under proper storage and handling conditions. Avoid repeated freeze-thaw cycles.
RefSeq:	<a href="#">NP_002781</a>
Locus ID:	5686



[View online »](#)

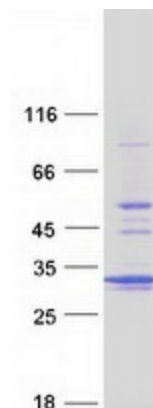
UniProt ID: [P28066](#), [A0A109NGN6](#)  
RefSeq Size: 1023  
Cytogenetics: 1p13.3  
RefSeq ORF: 723  
Synonyms: PSC5; ZETA

**Summary:** The proteasome is a multicatalytic proteinase complex with a highly ordered ring-shaped 20S core structure. The core structure is composed of 4 rings of 28 non-identical subunits; 2 rings are composed of 7 alpha subunits and 2 rings are composed of 7 beta subunits. Proteasomes are distributed throughout eukaryotic cells at a high concentration and cleave peptides in an ATP/ubiquitin-dependent process in a non-lysosomal pathway. An essential function of a modified proteasome, the immunoproteasome, is the processing of class I MHC peptides. This gene encodes a member of the peptidase T1A family, that is a 20S core alpha subunit. Multiple alternatively spliced transcript variants encoding two distinct isoforms have been found for this gene. [provided by RefSeq, Dec 2010]

**Protein Families:** Druggable Genome, Protease

**Protein Pathways:** Proteasome

### Product images:



Coomassie blue staining of purified PSMA5 protein (Cat# [TP310717]). The protein was produced from HEK293T cells transfected with PSMA5 cDNA clone (Cat# [RC210717]) using MegaTran 2.0 (Cat# [TT210002]).