

Product datasheet for **TP310708L**

RHBDD1 (NM_032276) Human Recombinant Protein

Product data:

Product Type:	Recombinant Proteins
Description:	Recombinant protein of human rhomboid domain containing 1 (RHBDD1), 1 mg
Species:	Human
Expression Host:	HEK293T
Expression cDNA Clone or AA Sequence:	>RC210708 protein sequence Red =Cloning site Green =Tags(s)

MQRRSRGINTGLILLLSQIFHVGINNIPPVTLATLALNIWFFLNPKPLYSSCLSVEKCYQQKDWQRLLL
SPLHHADDWHLYFNMASMLWKGINLERRLGSRWFAYVITAFSVLTGVVYLLQLFAVAEFMDEPDFKRSCA
VGFSGVLFALKVLNNHYCPGGFVNILGFPVPNRFACWVELVAIHLFSPGTSFAGHLGILVGLMYTQGPL
KKIMEACAGGFSSSVGYPRQYYFNSSGSSGYQDYYPHGRPDHYEEAPRNYDITYTAGLSEEEQLERALQA
SLWDRGNTRNSPPPYGFHLSPEEMRRQRLHRFDSQ

TRTRPLEQKLISEEDLAANDILDYKDDDDKV

Tag:	C-Myc/DDK
Predicted MW:	35.6 kDa
Concentration:	>0.05 µg/µL as determined by microplate BCA method
Purity:	> 80% as determined by SDS-PAGE and Coomassie blue staining
Buffer:	25 mM Tris-HCl, 100 mM glycine, pH 7.3, 10% glycerol
Preparation:	Recombinant protein was captured through anti-DDK affinity column followed by conventional chromatography steps.
Note:	For testing in cell culture applications, please filter before use. Note that you may experience some loss of protein during the filtration process.
Storage:	Store at -80°C.
Stability:	Stable for 12 months from the date of receipt of the product under proper storage and handling conditions. Avoid repeated freeze-thaw cycles.
RefSeq:	NP_115652
Locus ID:	84236



[View online »](#)

UniProt ID: [Q8TEB9](#)

RefSeq Size: 4868

Cytogenetics: 2q36.3

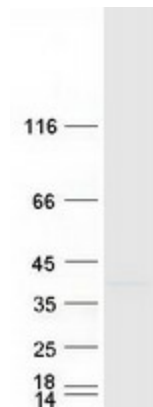
RefSeq ORF: 945

Synonyms: RHBDL4; RRP4

Summary: Intramembrane-cleaving serine protease that cleaves single transmembrane or multi-pass membrane proteins in the hydrophobic plane of the membrane, luminal loops and juxtamembrane regions. Involved in regulated intramembrane proteolysis and the subsequent release of functional polypeptides from their membrane anchors. Functional component of endoplasmic reticulum-associated degradation (ERAD) for misfolded membrane proteins. Required for the degradation process of some specific misfolded endoplasmic reticulum (ER) luminal proteins. Participates in the transfer of misfolded proteins from the ER to the cytosol, where they are destroyed by the proteasome in a ubiquitin-dependent manner. Functions in BIK, MPZ, PKD1, PTCRA, RHO, STEAP3 and TRAC processing. Involved in the regulation of exosomal secretion; inhibits the TSAP6-mediated secretion pathway. Involved in the regulation of apoptosis; modulates BIK-mediated apoptotic activity. Also plays a role in the regulation of spermatogenesis; inhibits apoptotic activity in spermatogonia.[UniProtKB/Swiss-Prot Function]

Protein Families: Transmembrane

Product images:



Coomassie blue staining of purified RHBDD1 protein (Cat# [TP310708]). The protein was produced from HEK293T cells transfected with RHBDD1 cDNA clone (Cat# [RC210708]) using MegaTran 2.0 (Cat# [TT210002]).