

Product datasheet for **TP310703M**

METTL4 (NM_022840) Human Recombinant Protein

Product data:

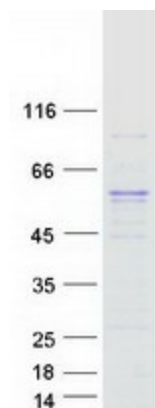
Product Type:	Recombinant Proteins
Description:	Recombinant protein of human methyltransferase like 4 (METTL4), 100 µg
Species:	Human
Expression Host:	HEK293T
Expression cDNA Clone or AA Sequence:	>RC210703 protein sequence Red =Cloning site Green =Tags(s)
	<p>MSVHQLSAGWLLDHLFINKINYQLHQHHEPCCRKKEFTTSVHFESLQMDSVSSSGVCAAFIASDSSTK PENDDGGNYEMFTRKFVFRPELFDVTKPYITPAVHKECQQSNEKEDLMNGVKKEISISIIGKKRRCVWF NQGELDAMEYHTKIRELILDGSLQLIQEGLKSGFLYPLFEKQDKGSKPITLPLDACSLCEMAKHLPS LNEMEQTLQLVEEDTSVTEQDLFLRVVENNSSFTKIVITLMGQKYLPPKSSFLLSDISCMQPLLNYRKT FDVIVIDPPWQNKSVKRSNRYSYLSPLQIKQIPIPKLAAPNCLLVTVWVTRNQKHLRFIKEELYPSWSVEV VAEWHWVKITNSGEFVPLDSPHKPYEGLILGRVQEKALPLRNADVNVLPDPDHKLIVSVPCTLHSHK PPLAEVLKDYIKPDGEYLELFARNLQPGWTSWGNEVLKFQHVDYFIALES GS</p> <p>TRTRPLEQKLISEEDLAANDILDYKDDDDKV</p>
Tag:	C-Myc/DDK
Predicted MW:	53.9 kDa
Concentration:	>0.05 µg/µL as determined by microplate BCA method
Purity:	> 80% as determined by SDS-PAGE and Coomassie blue staining
Buffer:	25 mM Tris-HCl, 100 mM glycine, pH 7.3, 10% glycerol
Preparation:	Recombinant protein was captured through anti-DDK affinity column followed by conventional chromatography steps.
Note:	For testing in cell culture applications, please filter before use. Note that you may experience some loss of protein during the filtration process.
Storage:	Store at -80°C.
Stability:	Stable for 12 months from the date of receipt of the product under proper storage and handling conditions. Avoid repeated freeze-thaw cycles.
RefSeq:	<u>NP_073751</u>



[View online »](#)

Locus ID:	64863
UniProt ID:	Q8N3J2
RefSeq Size:	3691
Cytogenetics:	18p11.32
RefSeq ORF:	1416
Synonyms:	HsT661
Summary:	Probable methyltransferase.[UniProtKB/Swiss-Prot Function]

Product images:



Coomassie blue staining of purified METTL4 protein (Cat# [TP310703]). The protein was produced from HEK293T cells transfected with METTL4 cDNA clone (Cat# [RC210703]) using MegaTran 2.0 (Cat# [TT210002]).