

## Product datasheet for **TP310703**

### **METTL4 (NM\_022840) Human Recombinant Protein**

#### Product data:

**Product Type:** Recombinant Proteins

**Description:** Recombinant protein of human methyltransferase like 4 (METTL4), 20 µg

**Species:** Human

**Expression Host:** HEK293T

**Expression cDNA Clone or AA Sequence:** >RC210703 protein sequence  
**Red**=Cloning site **Green**=Tags(s)

MSVHQLSAGWLLDHLFINKINYQLHQHHEPCCRKKEFTTSVHFESLQMDSVSSSGVCAAFIASDSSTK  
PENDDGGNYEMFTRKFVFRPELFDVTKPYITPAVHKECQQSNEKEDLMNGVKKEISISIIGKKRRCVWF  
NQGELDAMEYHTKIRELILDGSLQLIQEGLKSGFLYPLFEKQDKGSKPITPLDACSLCEMAKHLPS  
LNEMEQTLQLVEEDTSVTEQDLFLRVVENNSSFTKIVITLMGQKYLPPKSSFLLSDISCMQPLLNYRKT  
FDVIVIDPPWQNKSVKRSNRYSYLSPLQIKQIPIPKLAAPNCLLVTVWVTRQKHLRFIKEELYPSWSVEV  
VAEWHWVKITNSGEFVPLDSPHKPYEGLILGRVQEKALPLRNADVNVLPDPDHKLIVSVPCTLHSHK  
PPLAEVLKDYIKPDGEYLELFARNLQPGWTSWGNEVLKFQHVDYFIALES GS

**TRTRPLEQKLISEEDLAANDILDYKDDDDKV**

**Tag:** C-Myc/DDK

**Predicted MW:** 53.9 kDa

**Concentration:** >0.05 µg/µL as determined by microplate BCA method

**Purity:** > 80% as determined by SDS-PAGE and Coomassie blue staining

**Buffer:** 25 mM Tris-HCl, 100 mM glycine, pH 7.3, 10% glycerol

**Preparation:** Recombinant protein was captured through anti-DDK affinity column followed by conventional chromatography steps.

**Note:** For testing in cell culture applications, please filter before use. Note that you may experience some loss of protein during the filtration process.

**Storage:** Store at -80°C.

**Stability:** Stable for 12 months from the date of receipt of the product under proper storage and handling conditions. Avoid repeated freeze-thaw cycles.

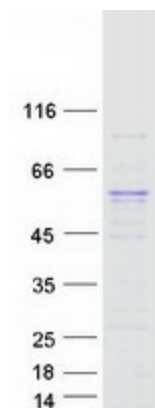
**RefSeq:** [NP\\_073751](#)



[View online »](#)

Locus ID:	64863
UniProt ID:	<a href="#">Q8N3J2</a>
RefSeq Size:	3691
Cytogenetics:	18p11.32
RefSeq ORF:	1416
Synonyms:	HsT661
Summary:	Probable methyltransferase.[UniProtKB/Swiss-Prot Function]

### Product images:



Coomassie blue staining of purified METTL4 protein (Cat# TP310703). The protein was produced from HEK293T cells transfected with METTL4 cDNA clone (Cat# [RC210703]) using MegaTran 2.0 (Cat# [TT210002]).