

## Product datasheet for **TP310681**

### PRH2 (NM\_005042) Human Recombinant Protein

#### Product data:

**Product Type:** Recombinant Proteins

**Description:** Recombinant protein of human proline-rich protein HaeIII subfamily 2 (PRH2), transcript variant 1, 20 µg

**Species:** Human

**Expression Host:** HEK293T

**Expression cDNA Clone or AA Sequence:** >RC210681 protein sequence  
Red=Cloning site Green=Tags(s)

MLLILLSVALLAFSSAQDLDEDVSQEDVPLVISDGGDSEQFIDEERQGPPLGGQQSQPSAGDGNQDDGPQ  
QGPPQQGGQQQQGPPPPQGKPKQGPPQQGGHPPPPQGRPQGPQQGGHPRPPRGRPQGPQQGGHQGGPP  
PPPGKPKGPPPPQGGRPQGPQQGSPQ

TRTRPLEQKLISEEDLAANDILDYKDDDDKV

**Tag:** C-Myc/DDK

**Predicted MW:** 16.8 kDa

**Concentration:** >0.05 µg/µL as determined by microplate BCA method

**Purity:** > 80% as determined by SDS-PAGE and Coomassie blue staining

**Buffer:** 25 mM Tris-HCl, 100 mM glycine, pH 7.3, 10% glycerol

**Preparation:** Recombinant protein was captured through anti-DDK affinity column followed by conventional chromatography steps.

**Note:** For testing in cell culture applications, please filter before use. Note that you may experience some loss of protein during the filtration process.

**Storage:** Store at -80°C.

**Stability:** Stable for 12 months from the date of receipt of the product under proper storage and handling conditions. Avoid repeated freeze-thaw cycles.

**RefSeq:** [NP\\_005033](#)

**Locus ID:** 5555



[View online »](#)

UniProt ID: [P02810](#)

RefSeq Size: 4323

Cytogenetics: 12p13.2

RefSeq ORF: 498

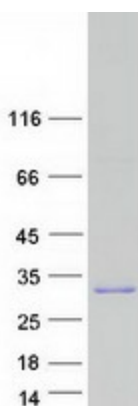
Synonyms: db-s; pa; PIF-S; Pr; pr1/Pr2; PRH1; PRP-1/PRP-2

**Summary:** This gene encodes a member of the heterogeneous family of proline-rich salivary glycoproteins. The encoded preproprotein undergoes proteolytic processing to generate one or more mature isoforms before secretion from the parotid and submandibular/sublingual glands. In western population this locus is commonly biallelic and encodes proline-rich protein (PRP) isoforms, PRP-1 and PRP-2. The reference genome encodes the PRP-1 allele. Certain alleles of this gene are associated with susceptibility to dental caries. This gene is located in a cluster of closely related salivary proline-rich proteins on chromosome 12. [provided by RefSeq, Oct 2015]

**Protein** Secreted Protein

**Families:**

### Product images:



Coomassie blue staining of purified PRH2 protein (Cat# TP310681). The protein was produced from HEK293T cells transfected with PRH2 cDNA clone (Cat# [RC210681]) using MegaTran 2.0 (Cat# [TT210002]).