

## Product datasheet for **TP310627M**

### Lactate Dehydrogenase C (LDHC) (NM\_017448) Human Recombinant Protein

#### Product data:

Product Type:	Recombinant Proteins
Description:	Recombinant protein of human lactate dehydrogenase C (LDHC), transcript variant 2, 100 µg
Species:	Human
Expression Host:	HEK293T
Expression cDNA Clone or AA Sequence:	>RC210627 protein sequence <b>Red</b> =Cloning site <b>Green</b> =Tags(s)

MSTVKEQLIEKLIEDDENSQCKITIVGTGAVGMACAISILLKDLADELALVDVALDKLKGEMMDLQHGSL  
FFSTSKITSGKDYSVSANSRIVIVTAGARQQEGETRLALVQRNVAIMKSIIPAIVHYSYDCKILVSNPV  
DILTYIWWKISGLPVTRVIGSGCNLDSARFRYLIGEKLVHPTSCHGWIIEHGDSSVPLWVGNNVAGVA  
LKTLDPKLGTSDSKEHWKNIHKQVIQSAYEIIKLGYSWAIGLSVMDLVGSILKNLRRVHPVSTMVKGL  
YGIKEELFLSIPCVLGRNGVSDVWKINLNSEEEALFKKSAETLWNIQKDLIF

**TRTRPLEQKLISEEDLAANDILDYKDDDDKV**

Tag:	C-Myc/DDK
Predicted MW:	36.1 kDa
Concentration:	>0.05 µg/µL as determined by microplate BCA method
Purity:	> 80% as determined by SDS-PAGE and Coomassie blue staining
Buffer:	25 mM Tris-HCl, 100 mM glycine, pH 7.3, 10% glycerol
Preparation:	Recombinant protein was captured through anti-DDK affinity column followed by conventional chromatography steps.
Note:	For testing in cell culture applications, please filter before use. Note that you may experience some loss of protein during the filtration process.
Storage:	Store at -80°C.
Stability:	Stable for 12 months from the date of receipt of the product under proper storage and handling conditions. Avoid repeated freeze-thaw cycles.
RefSeq:	<a href="#">NP_059144</a>
Locus ID:	3948



[View online »](#)

UniProt ID: [P07864](#), [A0A140VKA7](#)

RefSeq Size: 1264

Cytogenetics: 11p15.1

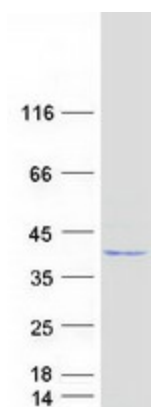
RefSeq ORF: 996

Synonyms: CT32; LDH3; LDHX

**Summary:** Lactate dehydrogenase C catalyzes the conversion of L-lactate and NAD to pyruvate and NADH in the final step of anaerobic glycolysis. LDHC is testis-specific and belongs to the lactate dehydrogenase family. Two transcript variants have been detected which differ in the 5' untranslated region. [provided by RefSeq, Jul 2008]

**Protein Pathways:** Cysteine and methionine metabolism, Glycolysis / Gluconeogenesis, Metabolic pathways, Propanoate metabolism, Pyruvate metabolism

### Product images:



Coomassie blue staining of purified LDHC protein (Cat# [TP310627]). The protein was produced from HEK293T cells transfected with LDHC cDNA clone (Cat# [RC210627]) using MegaTran 2.0 (Cat# [TT210002]).