

## Product datasheet for **TP310625L**

### **MDH1B (NM\_001039845) Human Recombinant Protein**

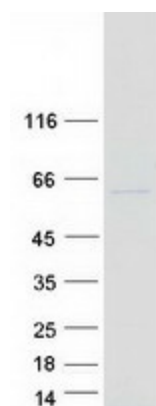
#### **Product data:**

<b>Product Type:</b>	Recombinant Proteins
<b>Description:</b>	Recombinant protein of human malate dehydrogenase 1B, NAD (soluble) (MDH1B), 1 mg
<b>Species:</b>	Human
<b>Expression Host:</b>	HEK293T
<b>Expression cDNA Clone or AA Sequence:</b>	>RC210625 protein sequence <b>Red</b> =Cloning site <b>Green</b> =Tags(s)
	<p>MAKFVIAGRADCPYYAKTELVDYLQKNLPDFRIHKITQRPEVWEDWLKDVCEKNKWSHKNSPIIWRELL DRGGKGLLLGGYNEFLEHAQLYYDVTSSMTTELMMVIAQENLGAHIEKEQEEALKTCINPLQVWITSAS APACYNLIPILTSGEVFGMHTEISITLFDNKQAEHLKSLVETQDLASPLRSVSICTKVEEAFRQAHV IVLDDSTNKEVFTLEDCLRSRVPLCRLYGYLIEKNAHESVRVIVGGRTFVNLTLLMRYAPRIAHNII AVALGVEGEAKAILARKLKTAPSYIKDVIIWGNISGNNYVDLRKTRVYRYESAIWGPLHYSRPVLNLIFD SEWVKREFVAILKNLTTTGRQFGGILAAHSIATTLKYWYHGSPPEIVSLGILSEGQFGIPKGIVFSMPV KFENGTVWVLTDLKDVEISEQIMTRMTSDLIQEKLVALGDKIHFPYQSGHKDLVPDEEKNLAMSDAAEF PNQIPQTTFEKPKQSLEFLNEFEGKTVES</p> <p><b>TRTRPLEQKLISEEDLAANDILDYKDDDDKV</b></p>
<b>Tag:</b>	C-Myc/DDK
<b>Predicted MW:</b>	58.5 kDa
<b>Concentration:</b>	>0.05 µg/µL as determined by microplate BCA method
<b>Purity:</b>	> 80% as determined by SDS-PAGE and Coomassie blue staining
<b>Buffer:</b>	25 mM Tris-HCl, 100 mM glycine, pH 7.3, 10% glycerol
<b>Preparation:</b>	Recombinant protein was captured through anti-DDK affinity column followed by conventional chromatography steps.
<b>Note:</b>	For testing in cell culture applications, please filter before use. Note that you may experience some loss of protein during the filtration process.
<b>Storage:</b>	Store at -80°C.
<b>Stability:</b>	Stable for 12 months from the date of receipt of the product under proper storage and handling conditions. Avoid repeated freeze-thaw cycles.



[View online »](#)

RefSeq: [NP\\_001034934](#)  
 Locus ID: 130752  
 UniProt ID: [Q5I0G3](#)  
 RefSeq Size: 2564  
 Cytogenetics: 2q33.3  
 RefSeq ORF: 1554  
 Synonyms: RP11-95H11

**Product images:**


Coomassie blue staining of purified MDH1B protein (Cat# [TP310625]). The protein was produced from HEK293T cells transfected with MDH1B cDNA clone (Cat# [RC210625]) using MegaTran 2.0 (Cat# [TT210002]).