

Product datasheet for **TP310625**

MDH1B (NM_001039845) Human Recombinant Protein

Product data:

Product Type:	Recombinant Proteins
Description:	Recombinant protein of human malate dehydrogenase 1B, NAD (soluble) (MDH1B), 20 µg
Species:	Human
Expression Host:	HEK293T
Expression cDNA Clone or AA Sequence:	>RC210625 protein sequence Red =Cloning site Green =Tags(s)

MAKFVIAGRADCPYYAKTELVADYLQKNLPDFRIHKITQRPEVWEDWLKDVCEKNKWSHKNSPIIWRELL
DRGGKGLLLGGYNEFLEHAQLYYDVTSSMTTELMMVIAQENLGAHIEKEQEEELKTCINPLQVWITSAS
APACYNLIPILTSGEVFGMHTEISITLFDNKQAEHLKSLVETQDLASPLRSVSICTKVEEAFRQAHV
IVLDDSTNKEVFTLEDCLRSRVPLCRLYGYLIEKNAHESVRVIVGGRTFVNLTLLMRYAPRIAHNII
AVALGVEGEAKAILARKLKTAPSYIKDVIWGNISGNYYDLRKTTRVRYESAIWGPLHYSRPVLNLIFD
SEWVKREFVAILKNLTTTGRQFGGILAAHSIATTLKYWYHGSPPGIVSLGILSEGQFGIPKGIVFSMPV
KFENGTVVLTDLKDVEISEQIMTRMTSLIQEKLVALGDKIHFPYQSGHKDLVPDEEKNLAMSDAAEF
PNQIPQTTFEKPKQSLEFLNEFEGKTVES

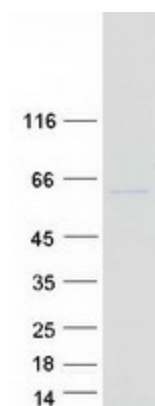
TRTRPLEQKLISEEDLAANDILDYKDDDDKV

Tag:	C-Myc/DDK
Predicted MW:	58.5 kDa
Concentration:	>0.05 µg/µL as determined by microplate BCA method
Purity:	> 80% as determined by SDS-PAGE and Coomassie blue staining
Buffer:	25 mM Tris-HCl, 100 mM glycine, pH 7.3, 10% glycerol
Preparation:	Recombinant protein was captured through anti-DDK affinity column followed by conventional chromatography steps.
Note:	For testing in cell culture applications, please filter before use. Note that you may experience some loss of protein during the filtration process.
Storage:	Store at -80°C.
Stability:	Stable for 12 months from the date of receipt of the product under proper storage and handling conditions. Avoid repeated freeze-thaw cycles.



[View online »](#)

RefSeq: [NP_001034934](#)
 Locus ID: 130752
 UniProt ID: [Q5I0G3](#)
 RefSeq Size: 2564
 Cytogenetics: 2q33.3
 RefSeq ORF: 1554
 Synonyms: RP11-95H11

Product images:


Coomassie blue staining of purified MDH1B protein (Cat# TP310625). The protein was produced from HEK293T cells transfected with MDH1B cDNA clone (Cat# [RC210625]) using MegaTran 2.0 (Cat# [TT210002]).