

Product datasheet for **TP310616M**

G3BP (G3BP1) (NM_198395) Human Recombinant Protein

Product data:

Product Type: Recombinant Proteins

Description: Recombinant protein of human GTPase activating protein (SH3 domain) binding protein 1 (G3BP1), transcript variant 2, 100 µg

Species: Human

Expression Host: HEK293T

Expression cDNA Clone or AA Sequence: >RC210616 protein sequence
Red=Cloning site **Green**=Tags(s)

MVMEKPSPLLVGREFVRQYYTLLNQAPDMLHRFYGKNSSYVHGGLDSNGKPADAVYGQKEIHRKVMSQNF
TNCHTKIRHVDAHATLNDGVVQVMGLLSNNNQALRRFMQTFVLAPEGSVANKFYVHNDIFRYQDEVFGG
FVTEPQEESEEEVEEPEERQQTPEVVPDSDSGTFYDQAVVSNDMEEHLEEPVAEPEPDPEPEPEQEPVSEI
QEEKPEPVLEETAPEDAQKSSSPADIAQTVQEDLRTFSWASVTSKNLPPSGAVPVTGIPPHVVKVPAS
QRPESKPESQIPPQRQRDQRVREQRINIPPQRGPRPIREAGEQGDIEPRRMVRHPDSHQLFIGNLPHE
VDKSELKDFQSYGNVVELRINSGGKLPNFGFVLLDDSEPVQKVLNSRNPIMFRGEVRLNVEEKKTRAARE
GDRRDNRLRGPGGPRGGLGGGMRGPPRGGMVQKPGFGVGRGLAPRQ

TRTRPLEQKLISEEDLAANDILDYKDDDDKV

Tag: C-Myc/DDK

Predicted MW: 52 kDa

Concentration: >0.05 µg/µL as determined by microplate BCA method

Purity: > 80% as determined by SDS-PAGE and Coomassie blue staining

Buffer: 25 mM Tris-HCl, 100 mM glycine, pH 7.3, 10% glycerol

Preparation: Recombinant protein was captured through anti-DDK affinity column followed by conventional chromatography steps.

Note: For testing in cell culture applications, please filter before use. Note that you may experience some loss of protein during the filtration process.

Storage: Store at -80°C.

Stability: Stable for 12 months from the date of receipt of the product under proper storage and handling conditions. Avoid repeated freeze-thaw cycles.



[View online >](#)

RefSeq: [NP_938405](#)

Locus ID: 10146

UniProt ID: [Q13283](#), [Q5U0Q1](#), [Q6ZP53](#)

RefSeq Size: 2824

Cytogenetics: 5q33.1

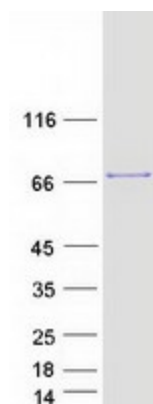
RefSeq ORF: 1398

Synonyms: G3BP; HDH-VIII

Summary: This gene encodes one of the DNA-unwinding enzymes which prefers partially unwound 3'-tailed substrates and can also unwind partial RNA/DNA and RNA/RNA duplexes in an ATP-dependent fashion. This enzyme is a member of the heterogeneous nuclear RNA-binding proteins and is also an element of the Ras signal transduction pathway. It binds specifically to the Ras-GTPase-activating protein by associating with its SH3 domain. Several alternatively spliced transcript variants of this gene have been described, but the full-length nature of some of these variants has not been determined. [provided by RefSeq, Jul 2008]

Protein Families: Druggable Genome

Product images:



Coomassie blue staining of purified G3BP1 protein (Cat# [TP310616]). The protein was produced from HEK293T cells transfected with G3BP1 cDNA clone (Cat# [RC210616]) using MegaTran 2.0 (Cat# [TT210002]).