

Product datasheet for **TP310606**

alpha Synuclein (SNCA) (NM_000345) Human Recombinant Protein

Product data:

Product Type:	Recombinant Proteins
Description:	Recombinant protein of human synuclein, alpha (non A4 component of amyloid precursor) (SNCA), transcript variant NACP140
Species:	Human
Expression Host:	HEK293T
Tag:	C-Myc/DDK
Predicted MW:	14.3 kDa
Concentration:	>50 ug/mL as determined by microplate BCA method
Purity:	> 80% as determined by SDS-PAGE and Coomassie blue staining
Buffer:	25 mM Tris.HCl, pH 7.3, 100 mM glycine, 10% glycerol
Preparation:	Recombinant protein was captured through anti-DDK affinity column followed by conventional chromatography steps.
Storage:	Store at -80°C.
Stability:	Stable for 12 months from the date of receipt of the product under proper storage and handling conditions. Avoid repeated freeze-thaw cycles.
RefSeq:	NP_000336
Locus ID:	6622
RefSeq Size:	1543
Cytogenetics:	4q22.1
RefSeq ORF:	420
Synonyms:	NACP; PARK1; PARK4; PD1
Summary:	Alpha-synuclein is a member of the synuclein family, which also includes beta- and gamma-synuclein. Synucleins are abundantly expressed in the brain and alpha- and beta-synuclein inhibit phospholipase D2 selectively. SNCA may serve to integrate presynaptic signaling and membrane trafficking. Defects in SNCA have been implicated in the pathogenesis of Parkinson disease. SNCA peptides are a major component of amyloid plaques in the brains of patients with Alzheimer's disease. Alternatively spliced transcripts encoding different isoforms have been identified for this gene. [provided by RefSeq, Feb 2016]

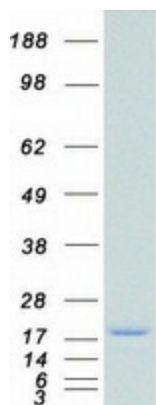


[View online »](#)

Protein Families: Druggable Genome

Protein Pathways: Alzheimer's disease, Parkinson's disease

Product images:



Coomassie blue staining of purified SNCA protein (Cat# TP310606). The protein was produced from HEK293T cells transfected with SNCA cDNA clone (Cat# [RC210606]) using MegaTran 2.0 (Cat# [TT210002]).