

Product datasheet for **TP310604M**

INPP1 (NM_002194) Human Recombinant Protein

Product data:

Product Type:	Recombinant Proteins
Description:	Recombinant protein of human inositol polyphosphate-1-phosphatase (INPP1), transcript variant 2, 100 µg
Species:	Human
Expression Host:	HEK293T
Expression cDNA Clone or AA Sequence:	>RC210604 protein sequence Red =Cloning site Green =Tags(s)
	MSDILRELLCVSEKAANIARACRQQEALFQLLIEEKKEGEKNKKFAVDFKTLADVLVQEVIKQNEMENKFP GLEKNIFGEESNEFTNDWGEKITLRLCSTEEETAELLSKVLNGNKVASEALARVHVDVAFTDPTLDSTE INVPQDILGIWVDPIDSTYQYIKGSADIKSNQGIFPCGLQCVTILIGVYDIQTGVPLMGVINQPFVSRDP NTLRWKGGQCYWGLSYMGTNMHSLQLTISRNRGSEHTGTGSEAAFPSPFSAVISTSEKETIKAALSRCV GDRIFGAAGAGYKSLCWWQGLVDIYIFSEDITTFKWDSCAAHAILRAMGGGIVDLKECLERNPETGLDLPQ LVYHVENEGAAGVDRWANKGGGLIAYRSRKRLETFLSLLVQNLAPAETHT
	TRTRPLEQKLISEEDLAANDILDYKDDDDKV
Tag:	C-Myc/DDK
Predicted MW:	43.8 kDa
Concentration:	>0.05 µg/µL as determined by microplate BCA method
Purity:	> 80% as determined by SDS-PAGE and Coomassie blue staining
Buffer:	25 mM Tris-HCl, 100 mM glycine, pH 7.3, 10% glycerol
Preparation:	Recombinant protein was captured through anti-DDK affinity column followed by conventional chromatography steps.
Note:	For testing in cell culture applications, please filter before use. Note that you may experience some loss of protein during the filtration process.
Storage:	Store at -80°C.
Stability:	Stable for 12 months from the date of receipt of the product under proper storage and handling conditions. Avoid repeated freeze-thaw cycles.
RefSeq:	<u>NP_002185</u>



[View online »](#)

Locus ID: 3628

UniProt ID: [P49441](#), [Q6IBG4](#)

RefSeq Size: 2035

Cytogenetics: 2q32.2

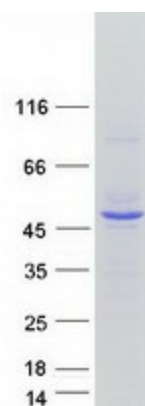
RefSeq ORF: 1197

Summary: This gene encodes the enzyme inositol polyphosphate-1-phosphatase, one of the enzymes involved in phosphatidylinositol signaling pathways. This enzyme removes the phosphate group at position 1 of the inositol ring from the polyphosphates inositol 1,4-bisphosphate and inositol 1,3,4-trisphosphate. [provided by RefSeq, Jul 2008]

Protein Families: Druggable Genome

Protein Pathways: Inositol phosphate metabolism, Metabolic pathways, Phosphatidylinositol signaling system

Product images:



Coomassie blue staining of purified INPP1 protein (Cat# [TP310604]). The protein was produced from HEK293T cells transfected with INPP1 cDNA clone (Cat# [RC210604]) using MegaTran 2.0 (Cat# [TT210002]).