

Product datasheet for **TP310596**

PITRM1 (NM_014889) Human Recombinant Protein

Product data:

Product Type: Recombinant Proteins
Description: Recombinant protein of human pitrilysin metallopeptidase 1 (PITRM1), 20 µg
Species: Human
Expression Host: HEK293T
Expression cDNA >RC210596 protein sequence
Clone or AA Sequence: **Red**=Cloning site **Green**=Tags(s)

MWRCGGRQGLCVLRRLSGGHAHHRWRWNSNRACERALQYKLGDKIHGFTVNQVTSVPELFLTAVKLTHD
 DTGARYLHLAREDTNNLFSVQFRTPMDSTGVPHILEHTVLCGSQKYPCRDPPFKMLNRSLSFMNAFTA
 SDYTVVPFSTQNPKDFQNLLSVYLDATFFPCLRELDWFQEGWRLEHENPSDPQTPLVFKGVVFNEMKGAF
 TDNERIFSQHLQNRLLPDHTYSVSGGDPLCIPELTWEQLKQFHATHYHPSNARFFTYGNFPLEQHLKQI
 HEEALSFKQKIEPSTVPAQTPWDKPREFQITCGPDSFATDPSKQTTVSVSFLLPDITDTFEAFTLSLLS
 SLLTSGPNSPFYKALIESGLGTDVDFSPDVGYNQYREAYFSVGLQGIVEKDIETVRSIDRTIDEVVEKGF
 EDDRIEALLHKIEIQMKHQSTSFGLMLTYSIASCWNHDGDPVELLKLGNQLAKFRQCLQENPKFLQEKVK
 QYFKNNQHKLTLSMRPDDKYHEKQAQVEATKQKQVEALSPGDRQQIYEGLELRSQQSKPQDASCLPAL
 KVSDIEPTIPVTELDWLTAGDIPVQYCAQPTNGMVYFRAFSSNLTLPEELRPYVPLFCSVLTKLGCGLL
 DYREQAQQIELKTGGMSASPHVLPDDSHMDTYEQGVLFSSCLDRNLPDMMQLWSEIFNPNPCFEIEEHFK
 VLVKMTAQELANGIPDSGHLYASIRAGRTLTPAGDLQETFSGMDQVRLMKRIAEMTDIKPILRKLPRIKK
 HLLNGDNMRCSVNATPQQMPQTEKAVEDFLRSIGRSKERRPVRPHTVEKVPVSSSGGDAHVPHGSQVIR
 KLVMEPTFKPWQMKTHFLMPFPVNYVGEICRTVPYTDPDHASFEILARLMTAKFLHTEIREKGGAYGGGA
 KLSHNGIFTLYSYRDPNTIETLQSFQKAVDWAKSGKFTQQDIDEAKLSVFSTVDAPVAPSDKGMDFLYG
 LSEMKAHQHREQLFAVSHDKLLAVSDRYLGTGKSTHGLAILGPENPKIAKDPDSWIIR

TRTRPLEQKLISEEDLAANDILDYKDDDDKV

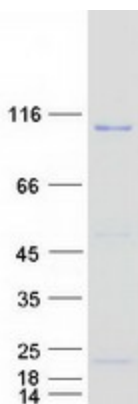
Tag: C-Myc/DDK
Predicted MW: 117.2 kDa
Concentration: >0.05 µg/µL as determined by microplate BCA method
Purity: > 80% as determined by SDS-PAGE and Coomassie blue staining
Buffer: 25 mM Tris-HCl, 100 mM glycine, pH 7.3, 10% glycerol



[View online »](#)

Preparation:	Recombinant protein was captured through anti-DDK affinity column followed by conventional chromatography steps.
Note:	For testing in cell culture applications, please filter before use. Note that you may experience some loss of protein during the filtration process.
Storage:	Store at -80°C.
Stability:	Stable for 12 months from the date of receipt of the product under proper storage and handling conditions. Avoid repeated freeze-thaw cycles.
RefSeq:	NP_055704
Locus ID:	10531
UniProt ID:	Q5JRX3
RefSeq Size:	3505
Cytogenetics:	10p15.2
RefSeq ORF:	3111
Synonyms:	MP1; PreP
Summary:	The protein encoded by this gene is an ATP-dependent metalloprotease that degrades post-cleavage mitochondrial transit peptides. The encoded protein binds zinc and can also degrade amyloid beta A4 protein, suggesting a possible role in Alzheimer's disease. [provided by RefSeq, Dec 2016]
Protein Families:	Druggable Genome, Protease

Product images:



Coomassie blue staining of purified PITRM1 protein (Cat# TP310596). The protein was produced from HEK293T cells transfected with PITRM1 cDNA clone (Cat# [RC210596]) using MegaTran 2.0 (Cat# [TT210002]).