

## Product datasheet for **TP310571SE**

### PLAT (NM\_000930) Human Recombinant Protein

#### Product data:

Product Type:	Recombinant Proteins
Description:	Purified recombinant protein of Human plasminogen activator, tissue (PLAT), secretory expressed in HEK293T cells, 20ug
Species:	Human
Expression Host:	HEK293T
Expression cDNA Clone or AA Sequence:	>RC210571 protein sequence <b>Red</b> =Cloning site <b>Green</b> =Tags(s)
	<p>MDAMKRGLLCCVLLLCGAVFVSPSQEIHARFRRGARSYQVICRDEKTQMIYQQHQSWLRPVLRSNRVEYCW CNSGRAQCHSVPVKSCSEPRCFNGGTCQQUALYFSDFVCQCPEGFAGKCCEIDTRATCYEDQGISYRGTS TAESGAECTNWNSSALAQKPYSGRRPDAIRLGLGNHNYCRNPDRDSKPWCYVFKAGKYSSEFCSTPACSE GNSDCYFGNGSAYRGTHSLTESGASCLPWNSMILIGKVYTAQNPSAALGLGKHNYCRNPDGDAPWCHV LKSRRLTWEYCDVPSCSTCGLRQYSQPQFRIKGGFLADIASHPWQAAIFAKHRRSPGERFLCGGILISS WILSAAHCFQERFPPHHLTVILGRTYRVVPGEEEQKFEVEKYIVHKEFDDDTYDNDIALQLKSDSSRCA QESSVVRTVCLPPADLQLPDWTECELSGYGKHEALSPFYSERLKEAHVRLYPSSRCTSQHLLNRTVTDNM LCAGDTRSGGPQANLHDACQGDGGPLVCLNDGRMTLVGIISWGLGCGQKDVPGVYTKVTNYLDWIRDNM RP</p> <p><b>TRTRPLEQKLISEEDLAANDILDYKDDDDKV</b></p>
Tag:	C-Myc/DDK
Predicted MW:	64.1 kDa
Concentration:	>50 ug/mL as determined by microplate Bradford method
Purity:	> 80% as determined by SDS-PAGE and Coomassie blue staining
Buffer:	25mM Tris-HCl, pH7.3, 100mM glycine, 10% glycerol
Note:	For culture applications, please filter before use. Note that you may experience some loss of protein during the filtration process.
Storage:	Store at -80°C after receiving vials.
Stability:	Stable for at least 1 year from receipt of products under proper storage and handling conditions. Avoid repeated freeze-thaw cycles.



[View online »](#)

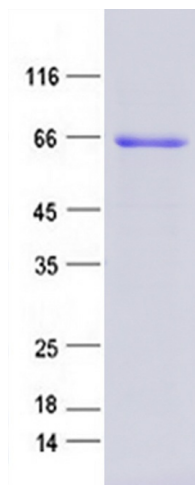
RefSeq: [NP\\_000921](#)  
Locus ID: 5327  
UniProt ID: [P00750](#)  
RefSeq Size: 3173  
Cytogenetics: 8p11.21  
RefSeq ORF: 1686  
Synonyms: T-PA; TPA

**Summary:** This gene encodes tissue-type plasminogen activator, a secreted serine protease that converts the proenzyme plasminogen to plasmin, a fibrinolytic enzyme. The encoded preproprotein is proteolytically processed by plasmin or trypsin to generate heavy and light chains. These chains associate via disulfide linkages to form the heterodimeric enzyme. This enzyme plays a role in cell migration and tissue remodeling. Increased enzymatic activity causes hyperfibrinolysis, which manifests as excessive bleeding, while decreased activity leads to hypofibrinolysis, which can result in thrombosis or embolism. Alternative splicing of this gene results in multiple transcript variants, at least one of which encodes an isoform that is proteolytically processed. [provided by RefSeq, Jan 2016]

**Protein Families:** Druggable Genome, Protease, Secreted Protein

**Protein Pathways:** Complement and coagulation cascades

### Product images:



Coomassie blue staining of purified PLAT protein (Cat #TP310571SE). The protein was produced from mammalian cells transfected with PLAT cDNA clone (Cat #[RC210571]).