

Product datasheet for **TP310563**

ATG5 (NM_004849) Human Recombinant Protein

Product data:

Product Type:	Recombinant Proteins
Description:	Recombinant protein of human ATG5 autophagy related 5 homolog (<i>S. cerevisiae</i>) (ATG5), 20 µg
Species:	Human
Expression Host:	HEK293T
Expression cDNA Clone or AA Sequence:	>RC210563 protein sequence Red =Cloning site Green =Tags(s)
	<p>MTDDKDVLRDWWFGRIPTCFTLYQDEITEREAEPYLLLPVSYLTLVTDKVKKHFQKVMRQEDISEIWF EYEGTPLKWHYPIGLLFDLLASSALPWNITVHFKSFPKDLLHCPSKDAIEAHFMSCMKEADALKHKSQ VINEMQKKDHKQLWMGLQNDRFDQFWAINRKLMEYPAEENGFYIPFRIYQTTTERPFIQKLFPRVAADG QLHTLGDLLKEVCPSAIDPEDGEKKNQVMIHGIEPMLETPLQWLSEHLSYPDNFLHISIIPQPTD</p> <p>TRTRPLEQKLISEEDLAANDILDYKDDDDKV</p>
Tag:	C-Myc/DDK
Predicted MW:	32.3 kDa
Concentration:	>0.05 µg/µL as determined by microplate BCA method
Purity:	> 80% as determined by SDS-PAGE and Coomassie blue staining
Buffer:	25 mM Tris-HCl, 100 mM glycine, pH 7.3, 10% glycerol
Preparation:	Recombinant protein was captured through anti-DDK affinity column followed by conventional chromatography steps.
Note:	For testing in cell culture applications, please filter before use. Note that you may experience some loss of protein during the filtration process.
Storage:	Store at -80°C.
Stability:	Stable for 12 months from the date of receipt of the product under proper storage and handling conditions. Avoid repeated freeze-thaw cycles.
RefSeq:	<u>NP_004840</u>
Locus ID:	9474



[View online »](#)

UniProt ID: [Q9H1Y0](#), [Q7Z3H3](#), [A9UGY9](#)

RefSeq Size: 3260

Cytogenetics: 6q21

RefSeq ORF: 825

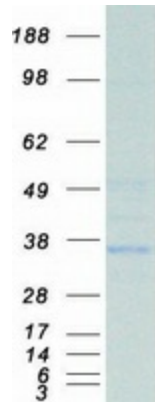
Synonyms: APG5; APG5-LIKE; APG5L; ASP; hAPG5; SCAR25

Summary: The protein encoded by this gene, in combination with autophagy protein 12, functions as an E1-like activating enzyme in a ubiquitin-like conjugating system. The encoded protein is involved in several cellular processes, including autophagic vesicle formation, mitochondrial quality control after oxidative damage, negative regulation of the innate antiviral immune response, lymphocyte development and proliferation, MHC II antigen presentation, adipocyte differentiation, and apoptosis. Several transcript variants encoding different protein isoforms have been found for this gene. [provided by RefSeq, Sep 2015]

Protein Families: Druggable Genome

Protein Pathways: Regulation of autophagy, RIG-I-like receptor signaling pathway

Product images:



Coomassie blue staining of purified ATG5 protein (Cat# TP310563). The protein was produced from HEK293T cells transfected with ATG5 cDNA clone (Cat# [RC210563]) using MegaTran 2.0 (Cat# [TT210002]).