

Product datasheet for **TP310556L**

SNRPE (NM_003094) Human Recombinant Protein

Product data:

Product Type:	Recombinant Proteins
Description:	Recombinant protein of human small nuclear ribonucleoprotein polypeptide E (SNRPE), 1 mg
Species:	Human
Expression Host:	HEK293T
Expression cDNA Clone or AA Sequence:	>RC210556 representing NM_003094 Red =Cloning site Green =Tags(s) MAYRGQGQKVQKVMVQPINLIFRYLQNRSRIQVWLVEQVNMRIEGCIIGFDEYMNVLDDAEEIHSKTKS RKQLGRIMLKGDNITLLQSVSN TRTRPLEQKLISEEDLAANDILDYKDDDDKV
Tag:	C-Myc/DDK
Predicted MW:	10.6 kDa
Concentration:	>0.05 µg/µL as determined by microplate BCA method
Purity:	> 80% as determined by SDS-PAGE and Coomassie blue staining
Buffer:	25 mM Tris-HCl, 100 mM glycine, pH 7.3, 10% glycerol
Preparation:	Recombinant protein was captured through anti-DDK affinity column followed by conventional chromatography steps.
Note:	For testing in cell culture applications, please filter before use. Note that you may experience some loss of protein during the filtration process.
Storage:	Store at -80°C.
Stability:	Stable for 12 months from the date of receipt of the product under proper storage and handling conditions. Avoid repeated freeze-thaw cycles.
RefSeq:	NP_003085
Locus ID:	6635
UniProt ID:	P62304
RefSeq Size:	1593
Cytogenetics:	1q32.1



[View online »](#)

RefSeq ORF: 276

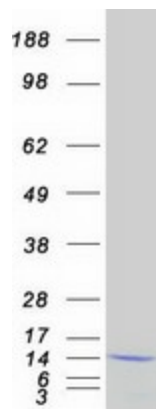
Synonyms: HYPT11; Sm-E; SME; snRNP-E

Summary: The protein encoded by this gene is a core component of U small nuclear ribonucleoproteins, which are key components of the pre-mRNA processing spliceosome. The encoded protein plays a role in the 3' end processing of histone transcripts. This protein is one of the targets in the autoimmune disease systemic lupus erythematosus, and mutations in this gene have been associated with hypotrichosis. Several pseudogenes of this gene have been identified. [provided by RefSeq, Jun 2016]

Protein Families: Stem cell - Pluripotency

Protein Pathways: Spliceosome

Product images:



Coomassie blue staining of purified SNRPE protein (Cat# [TP310556]). The protein was produced from HEK293T cells transfected with SNRPE cDNA clone (Cat# [RC210556]) using MegaTran 2.0 (Cat# [TT210002]).