

## Product datasheet for TP310540L

### RANBP10 (NM\_020850) Human Recombinant Protein

#### Product data:

Product Type:	Recombinant Proteins
Description:	Recombinant protein of human RAN binding protein 10 (RANBP10), 1 mg
Species:	Human
Expression Host:	HEK293T
Expression cDNA Clone or AA Sequence:	>RC210540 protein sequence <b>Red</b> =Cloning site <b>Green</b> =Tags(s)

MAAATADPGAGNPQPGDSSGGGAGGGLPSPGQEQLSRRLQRLYPVAVNQETPLPRSWSPKDKYNYIGLS  
Q  
GNLRVHYKGGHGNHKAASVRATHPIPAACGIYYFEVKIVSKGRDGYMGIGLSAQGVNMNRLPGWDKH  
SY  
GYHGDDGHSFCSSGTGQPYGPTFTTGDVIGCCVNLINGTCFYTKNGHSLGIAFTDLPANLYPTVGLQTPG  
EIVDANFGQQPFDFIEDYMREWRAKVQGTVHCFISARLGEWQAVLQNMVSSYLVHHGYCATATAFAR  
M  
TETPIQEEQASIKNRQKIQLVLEGRVGEAIETTQRFYPGLLEHNPNULLFMLKCRQFVEMVNGTDSEVRS  
LSSRSPKSQDSYPGSPSLSPRHGPPSSSHMHNTGADSPSCSNGVASTKSKQNHSKYPAPSSSSSSSSSSSS  
SSPSSVNYESNSTDSTKSQHHSSTSNQETSDSEVEMEAHYPNGVLGSMSTRIVNGAYKHEDLQTDSS  
MDDRHPRRQLCGGNQAATERIILFGRELQALSEQLGREYGKNLAHTEMLQDAFSLAYS DPWSCPVGQQ  
L  
DPIQREPVCAALNSAILESQNLPKQPPLMLALGQASECLRLMARAGLGSCSFARVDDYLH

**TRTRPLEQKLISEEDLAANDILDYKDDDDKV**

Tag:	C-Myc/DDK
Predicted MW:	67.1 kDa
Concentration:	>0.05 µg/µL as determined by microplate BCA method
Purity:	> 80% as determined by SDS-PAGE and Coomassie blue staining
Buffer:	25 mM Tris-HCl, 100 mM glycine, pH 7.3, 10% glycerol
Preparation:	Recombinant protein was captured through anti-DDK affinity column followed by conventional chromatography steps.



[View online »](#)

**Note:** For testing in cell culture applications, please filter before use. Note that you may experience some loss of protein during the filtration process.

**Storage:** Store at -80°C.

**Stability:** Stable for 12 months from the date of receipt of the product under proper storage and handling conditions. Avoid repeated freeze-thaw cycles.

**RefSeq:** [NP\\_065901](#)

**Locus ID:** 57610

**UniProt ID:** [Q6VN20](#)

**RefSeq Size:** 5305

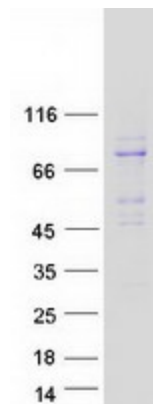
**Cytogenetics:** 16q22.1

**RefSeq ORF:** 1860

**Summary:** RAN is a small GTPase involved in the assembly of microtubules to form mitotic spindles. The protein encoded by this gene is a cytoplasmic guanine nucleotide exchange factor (GEF) that binds beta-tubulin and has GEF activity toward RAN. The encoded protein plays a role in the formation of noncentrosomal microtubules. In addition, this protein may be involved in the regulation of D(1) receptor signaling by protein kinase C delta and protein kinase C gamma. Several transcript variants encoding different isoforms have been found for this gene. [provided by RefSeq, Feb 2016]

**Protein Families:** Druggable Genome

### Product images:



Coomassie blue staining of purified RANBP10 protein (Cat# [TP310540]). The protein was produced from HEK293T cells transfected with RANBP10 cDNA clone (Cat# [RC210540]) using MegaTran 2.0 (Cat# [TT210002]).