

Product datasheet for **TP310540**

RANBP10 (NM_020850) Human Recombinant Protein

Product data:

Product Type: Recombinant Proteins
Description: Recombinant protein of human RAN binding protein 10 (RANBP10), 20 µg
Species: Human
Expression Host: HEK293T
Expression cDNA >RC210540 protein sequence
Clone or AA Sequence: **Red**=Cloning site **Green**=Tags(s)

MAAATADPGAGNPQPGDSSGGGAGGGLPSPGEQELSRRLQRLYPVAVNQETPLPRSWSPKDKYNYIGLSQ
GNLRVHYKGGHGNHKAASVRATHPIPAACGIYYFEVKIVSKGRDGYMGIGLSAQGVNMNRLPGWDKHSY
GYHGDDGHSFCSSGTGQPYGPTFTTGDVIGCCVNLINGTCFYTKNGHSLGIAFTDLPANLYPTVGLQTPG
EIVDANFGQQPFDFIEDYMREWRAKVQGTVHCFIPISARLGEWQAVLQNMVSSYLVHHGYCATATAFARM
TETPIQEEQASIKNRQKIQLVLEGRVGEAIETTQRFYPGLLEHNPMLLFMLKCRQFVEMVNGTDSEVRS
LSSRSPKSQDSYPGSPSLSPRHGPSSSHMHNTGADSPSCSNGVASTKSKQNHSKYPAPSSSSSSSSSSSS
SSPSSVNYSESNSTDSTKSQHHSSTSNQETSSEVEMEAEHYPNGVLGSMSTRIVNGAYKHEDLQTDSESS
MDDRHRPRRLCGGNQAATERILFGRELQALSEQLGREYGKLNLAHTEMLQDAFSLAYS DPWSCPVGQQL
DPIQREPVCAALNSAILESQNLPKQPPLMLALGQASECLRLMARAGLGSCSFARVDDYLH

TRTRPLEQKLISEEDLAANDILDYKDDDDKV

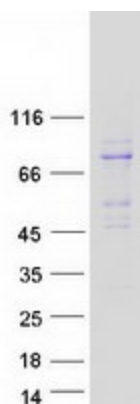
Tag: C-Myc/DDK
Predicted MW: 67.1 kDa
Concentration: >0.05 µg/µL as determined by microplate BCA method
Purity: > 80% as determined by SDS-PAGE and Coomassie blue staining
Buffer: 25 mM Tris-HCl, 100 mM glycine, pH 7.3, 10% glycerol
Preparation: Recombinant protein was captured through anti-DDK affinity column followed by conventional chromatography steps.
Note: For testing in cell culture applications, please filter before use. Note that you may experience some loss of protein during the filtration process.
Storage: Store at -80°C.



[View online »](#)

Stability:	Stable for 12 months from the date of receipt of the product under proper storage and handling conditions. Avoid repeated freeze-thaw cycles.
RefSeq:	NP_065901
Locus ID:	57610
UniProt ID:	Q6VN20
RefSeq Size:	5305
Cytogenetics:	16q22.1
RefSeq ORF:	1860
Summary:	RAN is a small GTPase involved in the assembly of microtubules to form mitotic spindles. The protein encoded by this gene is a cytoplasmic guanine nucleotide exchange factor (GEF) that binds beta-tubulin and has GEF activity toward RAN. The encoded protein plays a role in the formation of noncentrosomal microtubules. In addition, this protein may be involved in the regulation of D(1) receptor signaling by protein kinase C delta and protein kinase C gamma. Several transcript variants encoding different isoforms have been found for this gene. [provided by RefSeq, Feb 2016]
Protein Families:	Druggable Genome

Product images:



Coomassie blue staining of purified RANBP10 protein (Cat# TP310540). The protein was produced from HEK293T cells transfected with RANBP10 cDNA clone (Cat# [RC210540]) using MegaTran 2.0 (Cat# [TT210002]).