

Product datasheet for **TP310539L**

RBM35A (ESRP1) (NM_001034915) Human Recombinant Protein

Product data:

Product Type:	Recombinant Proteins
Description:	Recombinant protein of human epithelial splicing regulatory protein 1 (ESRP1), transcript variant 2, 1 mg
Species:	Human
Expression Host:	HEK293T
Expression cDNA Clone or AA Sequence:	>RC210539 protein sequence Red =Cloning site Green =Tags(s)

MTASPDYLVVLFGITAGATGAKLGSDEKELILLFWKVDLANKKVGQLHEVLVLRPDQLELTEDCKEETKI
DVESLSSASQLDQALRQFNQSVSNELNIGVGTSCFLCTDQGQLHVRQILHPEASKKNVLLPECFYSFFDLR
KEFKKCCPGSPDIDKLDVATMTEYLNFEKSSSVSRYGASQVEDMGNILAMISEPYNHRFSDPERVNYKF
ESGTCSKMEIIDDNTVVRARGLPWQSSDQDIARFFKGLNIAKGGAAALCLNAQRRNGEALVRFVSEEHRD
LALQRHKHHMGTRYIEVYKATGEDFLKIAGGTSNEVAQFLSKENQVIVRMRGLPFTATAEEVVAFFGQHC
PITGGKEGILFVTYPDGRPTGDAFVLFACEEYAQNALRKHKDLLGKRYIELFRSTAAEVQVLRNFSSAP
LIPLTPPIIPVLPQQFVPPTNVRDCIRLRGLPYAATIEDILDFLGEFATDIRTHGVHMLVNLHQGRPSGD
AFIQMKSADRAFMAAQKCHKKNMKDRYVEVFQCSAEEMNFVLMGGTLNRNGLSPPPCLSPPSYTFPAPAA
VIPTAAIYQPSVILNPRALQPSTAYYPAGTQLFMNYTAYYPSPPGSPNSLGYFPTAANLSGVPPQPGTV
VRMQGLAYNTGVKEILNFSQGYQYATEDGLIHTNDQARTLPKEWVCI

TRTRPLEQKLISEEDLAANDILDYKDDDDKV

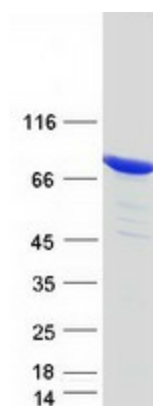
Tag:	C-Myc/DDK
Predicted MW:	75 kDa
Concentration:	>0.05 µg/µL as determined by microplate BCA method
Purity:	> 80% as determined by SDS-PAGE and Coomassie blue staining
Buffer:	25 mM Tris-HCl, 100 mM glycine, pH 7.3, 10% glycerol
Preparation:	Recombinant protein was captured through anti-DDK affinity column followed by conventional chromatography steps.
Note:	For testing in cell culture applications, please filter before use. Note that you may experience some loss of protein during the filtration process.
Storage:	Store at -80°C.



[View online »](#)

Stability:	Stable for 12 months from the date of receipt of the product under proper storage and handling conditions. Avoid repeated freeze-thaw cycles.
RefSeq:	NP_001030087
Locus ID:	54845
UniProt ID:	Q6NXG1
RefSeq Size:	3794
Cytogenetics:	8q22.1
RefSeq ORF:	2031
Synonyms:	DFNB109; RBM35A; RMB35A
Summary:	ESRP1 is an epithelial cell-type-specific splicing regulator (Warzecha et al., 2009 [PubMed 19285943]).[supplied by OMIM, Aug 2009]

Product images:



Coomassie blue staining of purified ESRP1 protein (Cat# [TP310539]). The protein was produced from HEK293T cells transfected with ESRP1 cDNA clone (Cat# [RC210539]) using MegaTran 2.0 (Cat# [TT210002]).