

Product datasheet for **TP310536**

OXLD1 (NM_001039842) Human Recombinant Protein

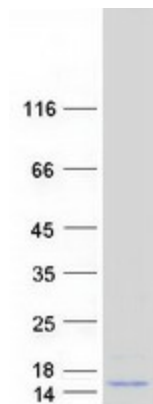
Product data:

Product Type:	Recombinant Proteins
Description:	Recombinant protein of human chromosome 17 open reading frame 90 (C17orf90), 20 µg
Species:	Human
Expression Host:	HEK293T
Expression cDNA	>RC210536 protein sequence
Clone or AA Sequence:	Red=Cloning site Green=Tags(s) MLLRRVVEGGRAVAAAVRGSGARRFSSPDCCQRLPGGGSFLLQRHHPGAQAPDGRRKFGTDHVEVGSQAGA DGTRPPKASLPPELQPPTNCCMSGCPNCVWVEYADRLLQHFQDGGERALAALAEHVADENLKAFLRMEIR LHTRCGG TRTRPLEQKLISEEDLAANDILDYKDDDDKV
Tag:	C-Myc/DDK
Predicted MW:	15.7 kDa
Concentration:	>0.05 µg/µL as determined by microplate BCA method
Purity:	> 80% as determined by SDS-PAGE and Coomassie blue staining
Buffer:	25 mM Tris-HCl, 100 mM glycine, pH 7.3, 10% glycerol
Preparation:	Recombinant protein was captured through anti-DDK affinity column followed by conventional chromatography steps.
Note:	For testing in cell culture applications, please filter before use. Note that you may experience some loss of protein during the filtration process.
Storage:	Store at -80°C.
Stability:	Stable for 12 months from the date of receipt of the product under proper storage and handling conditions. Avoid repeated freeze-thaw cycles.
RefSeq:	NP_001034931
Locus ID:	339229
UniProt ID:	Q5BKU9
RefSeq Size:	635



[View online »](#)

Cytogenetics: 17q25.3
RefSeq ORF: 441
Synonyms: C17orf90

Product images:

Coomassie blue staining of purified OXLD1 protein (Cat# TP310536). The protein was produced from HEK293T cells transfected with OXLD1 cDNA clone (Cat# [RC210536]) using MegaTran 2.0 (Cat# [TT210002]).