

Product datasheet for TP310529

CTBP1 (NM_001328) Human Recombinant Protein

Product data:

Product Type:	Recombinant Proteins
Description:	Recombinant protein of human C-terminal binding protein 1 (CTBP1), transcript variant 1, 20 µg
Species:	Human
Expression Host:	HEK293T
Expression cDNA Clone or AA Sequence:	>RC210529 protein sequence Red=Cloning site Green=Tags(s)

MGSSHLLNKGLPLGVRPPIMNGPLHPRPLVALLDGRDCTVEMPILKDVATVAFCDAAQSTQEIHEKVLNEA
VGALMYHTITLTREDLEKFKALRIIVRIGSGFDNIDIKSAGDLGIAVCNVPAAASVEETADSTLCHILNLY
RRATWLHQALREGTRVQSVEQIREVASGAARIRGETLGIIGLGRVGQAVLRAKAFGFNVLFYDPYLSDG
VERALGLQRVSTLQDLLFHSDCVTLHCGLNEHNHHLINDFTVKQMRQGAFLVNTARGGLVDEKALAQALK
EGRIRGAALDVHESEPLSFSQGPKDAPNLICTPHAAWYSEQASIEMREEAAREIRRAITGRIPDSLKNC
VNKDHLTAATHWASMDPAVVHPELNAAAYRPPGVVGVAPTGIPAAVEGIVPSAMSLSHGLPPVAHPPHA
PSPGQTVKPEADDRDASDQL

TRTRPLEQKLISEEDLAANDILDYKDDDDKV

Tag:	C-Myc/DDK
Predicted MW:	47.4 kDa
Concentration:	>0.05 µg/µL as determined by microplate BCA method
Purity:	> 80% as determined by SDS-PAGE and Coomassie blue staining
Buffer:	25 mM Tris-HCl, 100 mM glycine, pH 7.3, 10% glycerol
Preparation:	Recombinant protein was captured through anti-DDK affinity column followed by conventional chromatography steps.
Note:	For testing in cell culture applications, please filter before use. Note that you may experience some loss of protein during the filtration process.
Storage:	Store at -80°C.
Stability:	Stable for 12 months from the date of receipt of the product under proper storage and handling conditions. Avoid repeated freeze-thaw cycles.



[View online »](#)

RefSeq: [NP_001319](#)

Locus ID: 1487

UniProt ID: [Q13363](#)

RefSeq Size: 2288

Cytogenetics: 4p16.3

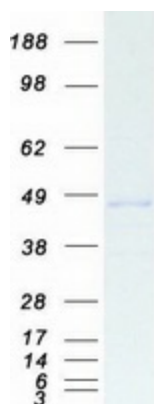
RefSeq ORF: 1320

Synonyms: BARS; HADDTS

Summary: This gene encodes a protein that binds to the C-terminus of adenovirus E1A proteins. This phosphoprotein is a transcriptional repressor and may play a role during cellular proliferation. This protein and the product of a second closely related gene, CTBP2, can dimerize. Both proteins can also interact with a polycomb group protein complex which participates in regulation of gene expression during development. Alternative splicing of transcripts from this gene results in multiple transcript variants. [provided by RefSeq, Jul 2008]

Protein Pathways: Chronic myeloid leukemia, Notch signaling pathway, Pathways in cancer, Wnt signaling pathway

Product images:



Coomassie blue staining of purified CTBP1 protein (Cat# TP310529). The protein was produced from HEK293T cells transfected with CTBP1 cDNA clone (Cat# [RC210529]) using MegaTran 2.0 (Cat# [TT210002]).