

## Product datasheet for TP310526

### C4orf46 (NM\_001008393) Human Recombinant Protein

#### Product data:

Product Type:	Recombinant Proteins
Description:	Recombinant protein of human chromosome 4 open reading frame 46 (C4orf46), 20 µg
Species:	Human
Expression Host:	HEK293T
Expression cDNA Clone or AA Sequence:	>RC210526 protein sequence <span style="color: red;">Red</span> =Cloning site <span style="color: green;">Green</span> =Tags(s)  MADPEELQVSSPPPPPPSSPSSSDASAASSPGGPVSLGWPVPSRSSGPTVDQLEEVELQIGDAAFSCLKL LEATSAVSAQVEELAFKCTENARFLKTWRDLLKEGYDSLKPDD  <span style="color: red;">TR</span> <span style="color: green;">TRPLEQKLISEEDLAANDILDYKDDDDKV</span>
Tag:	C-Myc/DDK
Predicted MW:	11.7 kDa
Concentration:	>0.05 µg/µL as determined by microplate BCA method
Purity:	> 80% as determined by SDS-PAGE and Coomassie blue staining
Buffer:	25 mM Tris-HCl, 100 mM glycine, pH 7.3, 10% glycerol
Preparation:	Recombinant protein was captured through anti-DDK affinity column followed by conventional chromatography steps.
Note:	For testing in cell culture applications, please filter before use. Note that you may experience some loss of protein during the filtration process.
Storage:	Store at -80°C.
Stability:	Stable for 12 months from the date of receipt of the product under proper storage and handling conditions. Avoid repeated freeze-thaw cycles.
RefSeq:	<a href="#">NP_001008394</a>
Locus ID:	201725
UniProt ID:	<a href="#">Q504U0</a>
RefSeq Size:	3545
Cytogenetics:	4q32.1

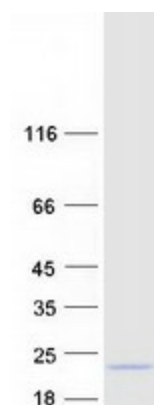

[View online »](#)

RefSeq ORF: 339

Synonyms: RCDG1

Summary: This gene encodes a small, conserved protein of unknown function that is expressed in a variety of tissues. There are pseudogenes for this gene on chromosomes 6, 8, 16, and X. Alternative splicing results in multiple transcript variants. [provided by RefSeq, Feb 2013]

### Product images:



Coomassie blue staining of purified C4orf46 protein (Cat# TP310526). The protein was produced from HEK293T cells transfected with C4orf46 cDNA clone (Cat# [RC210526]) using MegaTran 2.0 (Cat# [TT210002]).