

Product datasheet for **TP310523M**

MAN2B2 (NM_015274) Human Recombinant Protein

Product data:

Product Type: Recombinant Proteins
Description: Recombinant protein of human mannosidase, alpha, class 2B, member 2 (MAN2B2), 100 µg
Species: Human
Expression Host: HEK293T
Expression cDNA >RC210523 protein sequence
Clone or AA Sequence: **Red**=Cloning site **Green**=Tags(s)

MGQLCWLPLLAPLLLLRPPGVQSAGPIRAFVPHSHMDVGVVYTVQESMRAYAANVYTSVVEELARGQQR
RFIAVEQEFFRLWWDGVASDQQKYQVRQLLEEGRLEFVIGGQVMHDEAVTHLDDQILQLTEGHGFLYETF
GIRPQFSWHVDPFGASATPTLALAGFNAHLGSRIDYDLKAAMQEARGLQFVWRGSPSLSERQEIFTHI
MDQYSYCTPSHIPFSNRSGFYWNGVAVFPKPPPDGVYPMSEPVTPANINLYAEALVANVKQRAAWFRT
HVLWPWGC DKQFFNASVQFANMDPLLDHINSHAAELGVSVQYATLGDYFRALHALNVTWRVRDHHDFLPY
STEPFQAWTGFYTSRSSLKGLARRASALLYAGESMFTRYLWPAPRGHLDPTWALQQLQLRWAVSEVQHH
DAITGTESPKVRDMYATHLASGMLGVRKLMASIVLDELQPQAPMAASSDAGPAGHFASVYNPLAWTVTTI
VTLTVGFPGVVRTDEAGHPVPSQIQNSTETPSAYDLLILTTPGLSYRHYSIRPTAGAEQTQEPAAATVA
STLQFGRRLRRRRTSHAGRYLVPVANDCYIVLLDQDTNLMHSIWERSNRVTQEFLEYHVNRDVKQGP
ISDNYLFTPGKAAVPAWEAVEVEIVAGQLVTEIRQYFYRNMATAQNYTYAIRSRLTHVPQGHGELLCHRI
EQEYQAGPLELNREAVLRTSTNLNSQQVIYSDNNGYQMQRPPYVSYVNNIARNYPMVQSAFMEDGKSR
LVLLSERAHGISSQNGQVEVMLHRRLWNNFDWDLGYNLTLNDTSVHPVLWLLGWSLTTALRQRSAL
ALQHRPVVLFGLAGTAPKLPGPQQEAVTLPPNLHLQILSIPGWRYSSNHTESQNLKRGHRGEAQADL
RRVLLRLYHLYEVGEDPVLSQPVTVNLEAVLQALGSVWAVEERSLTGTWDL SMLHRWSWRTGPGRHRGDT
TSPSRPPGGPIITVHPKEIRTFIHFQQQ

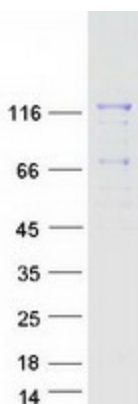
TRTRPLEQKLISEEDLAANDILDYKDDDDKV

Tag: C-Myc/DDK
Predicted MW: 113.8 kDa
Concentration: >0.05 µg/µL as determined by microplate BCA method
Purity: > 80% as determined by SDS-PAGE and Coomassie blue staining
Buffer: 25 mM Tris-HCl, 100 mM glycine, pH 7.3, 10% glycerol



[View online »](#)

Preparation:	Recombinant protein was captured through anti-DDK affinity column followed by conventional chromatography steps.
Note:	For testing in cell culture applications, please filter before use. Note that you may experience some loss of protein during the filtration process.
Storage:	Store at -80°C.
Stability:	Stable for 12 months from the date of receipt of the product under proper storage and handling conditions. Avoid repeated freeze-thaw cycles.
RefSeq:	NP_056089
Locus ID:	23324
UniProt ID:	Q9Y2E5
RefSeq Size:	4201
Cytogenetics:	4p16.1
RefSeq ORF:	3027
Protein Families:	Druggable Genome, Secreted Protein
Protein Pathways:	Other glycan degradation

Product images:

Coomassie blue staining of purified MAN2B2 protein (Cat# [TP310523]). The protein was produced from HEK293T cells transfected with MAN2B2 cDNA clone (Cat# [RC210523]) using MegaTran 2.0 (Cat# [TT210002]).