

Product datasheet for TP310521L

Aminopeptidase A (ENPEP) (NM_001977) Human Recombinant Protein

Product data:

Product Type:	Recombinant Proteins
Description:	Recombinant protein of human glutamyl aminopeptidase (aminopeptidase A) (ENPEP), 1 mg
Species:	Human
Expression Host:	HEK293T
Expression cDNA Clone or AA Sequence:	>RC210521 protein sequence Red =Cloning site Green =Tags(s)

MNFAEREGSKRYCIQTKHVAILCAVVGVGLIVGLAVGLTRSCDSSGGGGPGTAPAPSHLPSSTASPSGP
PAQDQDICPASEDESGQWKNFRLPDFVNPVHYDLHVKPLLEEDTYTGTVSISINLSAPTRYLWLHLRETR
ITRPELKRPSGDQVQVRRRCFEYKKQEYVVEAEELTPSSGDGLYLLTMEFAGWLNGLVGFYRTTYTE
NGRVKSIVATDHEPTDARKSFPCFDEPNKKATYTSITHPKKEYGALSMPVAKEESVDDKWTRTTFEKSV
PMSTYLVCFAVHQFDSVKRISNSGKPLTIYVQPEQKHTAEYAANITKSVFDYFEEYFAMNYSLPKLDKIA
IPDFGTGAMENWGLITYRETNLLYDPKESASSNQQRVATVVAHELVAHQWFGNIVTMDWWEDLWLNFGAS
FFEFGLGNHAETDWQMRDQMLLEDVLPVQEDDSLMSHPPIVTVTTPDEITSVFDGISYSKGGSSILRMLE
DWIKPENFQKGCQMYLEKYQFKNAKTSDFWAALAEASRLPVKEVMDTWTRQMGYPVLNVNGVKNITQKRF
LLDPRANPSQPPSDLGYTWNIPVKWTEENITSSVLFNRSEKEGITLNSSNPSGNAFLKINPDHIGFYRVN
YEVATWDSIATALS LNHKTFSSADRASLIDDAFALARAQLLDYKVALNLT KYLKREENFLPWQRVISAVT
YIISMFEDDKELYPMIEEYFQGQVKPIADSLGWNDAGDHVTKLLRSSLVGFACKMGDREALNNASSLFEQ
WLNGLTVSLPVNLRLLVYRYGMQNSGNEISWNYTLEQYQKTS LAQEKEKLLYGLASVKNVTLLSRYLDLLK
DTNLIKTDVFTVIRYISYNSYGKNMAWNWIQLNWDYLVNRYTLNRRNLGRIVTIAEPFNTELQLWQMES
FFAKYPQAGAGEKPREQVLETVKNNIEWLQHRNTIREWFFNLLESG

TRTRPLEQKLISEEDLAANDILDYKDDDDKV

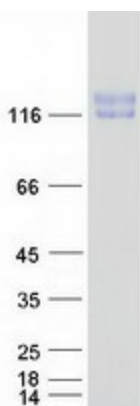
Tag:	C-Myc/DDK
Predicted MW:	109.1 kDa
Concentration:	>0.05 µg/µL as determined by microplate BCA method
Purity:	> 80% as determined by SDS-PAGE and Coomassie blue staining
Buffer:	25 mM Tris-HCl, 100 mM glycine, pH 7.3, 10% glycerol
Preparation:	Recombinant protein was captured through anti-DDK affinity column followed by conventional chromatography steps.



[View online »](#)

Note:	For testing in cell culture applications, please filter before use. Note that you may experience some loss of protein during the filtration process.
Storage:	Store at -80°C.
Stability:	Stable for 12 months from the date of receipt of the product under proper storage and handling conditions. Avoid repeated freeze-thaw cycles.
RefSeq:	NP_001968
Locus ID:	2028
UniProt ID:	Q07075
RefSeq Size:	5004
Cytogenetics:	4q25
RefSeq ORF:	2871
Synonyms:	APA; CD249; gp160
Summary:	The ENPEP gene encodes glutamyl aminopeptidase, a type II integral membrane protein with an extracellular zinc-binding domain. This protein can upregulate blood pressure by cleaving the N-terminal aspartate from angiotensin II, and can regulate blood vessel formation and enhance tumorigenesis in some tissues. Along with ANPEP and DPP4, ENPEP was found to be a candidate co-receptor for the coronavirus SARS-CoV-2, which causes COVID-19. [provided by RefSeq, Apr 2020]
Protein Families:	Druggable Genome, ES Cell Differentiation/IPS, Protease, Transmembrane
Protein Pathways:	Renin-angiotensin system

Product images:



Coomassie blue staining of purified ENPEP protein (Cat# [TP310521]). The protein was produced from HEK293T cells transfected with ENPEP cDNA clone (Cat# [RC210521]) using MegaTran 2.0 (Cat# [TT210002]).