

## Product datasheet for TP310516

### Jagged1 (JAG1) (NM\_000214) Human Recombinant Protein

#### Product data:

**Product Type:** Recombinant Proteins  
**Description:** Recombinant protein of human jagged 1 (Alagille syndrome) (JAG1), 20 µg  
**Species:** Human  
**Expression Host:** HEK293T  
**Expression cDNA Clone or AA Sequence:** >RC210516 representing NM\_000214  
Red=Cloning site Green=Tags(s)

MRSRPRTRGRSGRPLSLLLALLCALRAKVCASGQFELEILSMQNVNDELQNGNCCGGARNPGDRKCTRDE  
 CDTYFKVCLKEYQSRVTAGGPCSFSGSTPVIGGNTFNLKASRGNDRNRIVLPFSFAWPRSYPYLLVEAWD  
 SSNDTVQPDSIIEKASHSGMINPSRQWQTLKQNTGVAHFYQIRVTCDDYYYGFGCNKFCRPRDDFFGHY  
 ACDQNGNKTCMEGWMGPECNRAICRQGCSPKHGSKLPGDCRCQYGWQGLYCDKICPHPGCVHIGICNEPW  
 QCLCETNWGGQLCDKDLNYCGTHQPCLNGGTCSENTGPDYKQCSCPEGYSGPNCEIAEHAACLSDPCHNRGS  
 CKETSLGFECECSPGWTGPTCSTNIDDCSPNNCSHGGTCQDLVNGFKVCPPQWTGKTCQLDANECEAKP  
 CVNAKSKNLIASYYCDCLPGWMGQNCNININDCLGQCQNDASCRDLVNGYRCCPPGYAGDHCERDIDE  
 CASNPCLNGGHCQNEINRFQCLCPTGFSGNLCQLDIDYCEPNPCQNGAQCYNRASDYFCKCPEDYEGKNC  
 SHLKDHCRTTPCEVIDSCTVAMASNDTPEGVRYISSNVCGPHGKCKSQSGGKFTCDCNKGFTGTYCHENI  
 NDCESNPCRNGGTCIDGVNSYKICSDGWEGAYCETNINDCSQNPCHNGGTCRDLVNDYFCDCCKNGWKGG  
 TCHSRDSQCDEATCNGGTCYDEGDAFKCMCPGGWEGTTCNIARNSSCLPNPCHNGGTCVWNGESFTCVK  
 KEGWEGPICAQNTNDCSPHPCYNSGTCVDGDNWYRCECAPGFAGPDCRININECQSSPCAFGATCVDEIN  
 GYRCVCPGPHSGAKCQEVSGRPCITMGSVIRDGAKWDDDCNTCQCLNGRIACSKVWCGPRPCLLHKGHSE  
 CPSGQSCIPILDDQCFVHPCTGVGECRSSLQPVKTKCTSDSYQDNCANITFTFNKEMMSPGLTTEHIC  
 SELRNLNILKNVSAEYSIYACEPSANNEIHVAISAEDIRDDGNPIKEITDKIIDLVSKRDGNSSLIA  
 AVAEVRVQRRPLKNRTDFLVPLLSVLTVAWICCLVTAFYWCLRRKPKGSHTHSASEDNTTNNVREQLN  
 QIKNPIEKHGANTVPIKDYENKNSKMSKIRTHNSEVEEDMDKHQQKARFAKQPAYTLVDREKPPNGTL  
 TKHPNWTNKQDNRDLESAQSLNRMEYIV

TRTRPLEQKLISEEDLAANDILDYKDDDDKV

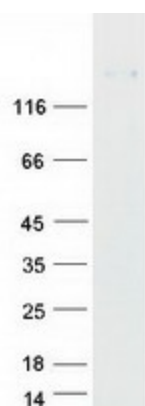
**Tag:** C-Myc/DDK  
**Predicted MW:** 133.6 kDa  
**Concentration:** >0.05 µg/µL as determined by microplate BCA method  
**Purity:** > 80% as determined by SDS-PAGE and Coomassie blue staining



[View online »](#)

<b>Buffer:</b>	25 mM Tris-HCl, 100 mM glycine, pH 7.3, 10% glycerol
<b>Preparation:</b>	Recombinant protein was captured through anti-DDK affinity column followed by conventional chromatography steps.
<b>Note:</b>	For testing in cell culture applications, please filter before use. Note that you may experience some loss of protein during the filtration process.
<b>Storage:</b>	Store at -80°C.
<b>Stability:</b>	Stable for 12 months from the date of receipt of the product under proper storage and handling conditions. Avoid repeated freeze-thaw cycles.
<b>RefSeq:</b>	<a href="#">NP_000205</a>
<b>Locus ID:</b>	182
<b>UniProt ID:</b>	<a href="#">P78504</a>
<b>RefSeq Size:</b>	5896
<b>Cytogenetics:</b>	20p12.2
<b>RefSeq ORF:</b>	3654
<b>Synonyms:</b>	AGS; AGS1; AHD; AWS; CD339; DCHE; HJ1; JAGL1
<b>Summary:</b>	The jagged 1 protein encoded by JAG1 is the human homolog of the Drosophila jagged protein. Human jagged 1 is the ligand for the receptor notch 1, the latter is involved in signaling processes. Mutations that alter the jagged 1 protein cause Alagille syndrome. Jagged 1 signalling through notch 1 has also been shown to play a role in hematopoiesis. [provided by RefSeq, Nov 2019]
<b>Protein Families:</b>	Druggable Genome, ES Cell Differentiation/IPS, Transmembrane
<b>Protein Pathways:</b>	Notch signaling pathway

### Product images:



Coomassie blue staining of purified JAG1 protein (Cat# TP310516). The protein was produced from HEK293T cells transfected with JAG1 cDNA clone (Cat# [RC210516]) using MegaTran 2.0 (Cat# [TT210002]).