

## Product datasheet for **TP310510L**

### **RAB21 (NM\_014999) Human Recombinant Protein**

#### Product data:

Product Type:	Recombinant Proteins
Description:	Recombinant protein of human RAB21, member RAS oncogene family (RAB21), 1 mg
Species:	Human
Expression Host:	HEK293T
Expression cDNA Clone or AA Sequence:	>RC210510 protein sequence <b>Red</b> =Cloning site <b>Green</b> =Tags(s)

MAAAGGGGGGAAAAGRAYSFKVVLLGEGCVGKTSVLVRYCENKFNDKHITTLQASFLTKKLNIGGKRVNL  
AIWDTAGQERFHALGPIYYRDSNGAILVYDITDEDSFQVKVKNWVKELRKMLGNEICLCIVGNKIDLEKER  
HVSIQEAESYAESVGA KH YHTSAKQNKGIEELFLDLCKRMIETAQVDERAKGNGSSQPGTARRGVQIIDD  
EPQAQTSGGGCCSSG

**TRTRPLEQKLISEEDLAANDILDYKDDDDKV**

Tag:	C-Myc/DDK
Predicted MW:	24.2 kDa
Concentration:	>0.05 µg/µL as determined by microplate BCA method
Purity:	> 80% as determined by SDS-PAGE and Coomassie blue staining
Buffer:	25 mM Tris-HCl, 100 mM glycine, pH 7.3, 10% glycerol
Preparation:	Recombinant protein was captured through anti-DDK affinity column followed by conventional chromatography steps.
Note:	For testing in cell culture applications, please filter before use. Note that you may experience some loss of protein during the filtration process.
Storage:	Store at -80°C.
Stability:	Stable for 12 months from the date of receipt of the product under proper storage and handling conditions. Avoid repeated freeze-thaw cycles.
RefSeq:	<a href="#">NP_055814</a>
Locus ID:	23011
UniProt ID:	<a href="#">Q9UL25</a> , <a href="#">A0A024RBA9</a>



[View online »](#)

RefSeq Size: 2627

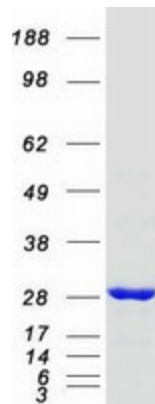
Cytogenetics: 12q21.1

RefSeq ORF: 675

**Summary:** This gene belongs to the Rab family of monomeric GTPases, which are involved in the control of cellular membrane traffic. The encoded protein plays a role in the targeted trafficking of integrins via its association with integrin alpha tails. As a consequence, the encoded protein is involved in the regulation of cell adhesion and migration. Expression of this gene is associated with a poor prognosis for glioma patients. This gene is downregulated by the tumor suppressor miR-200b, and miRNA-200b is itself downregulated in glioma tissues. [provided by RefSeq, Nov 2015]

**Protein Families:** Druggable Genome

### Product images:



Coomassie blue staining of purified RAB21 protein (Cat# [TP310510]). The protein was produced from HEK293T cells transfected with RAB21 cDNA clone (Cat# [RC210510]) using MegaTran 2.0 (Cat# [TT210002]).