

## Product datasheet for **TP310509M**

### **SAPS1 (PPP6R1) (NM\_014931) Human Recombinant Protein**

#### Product data:

Product Type:	Recombinant Proteins
Description:	Recombinant protein of human SAPS domain family, member 1 (SAPS1), 100 µg
Species:	Human
Expression Host:	HEK293T
Expression cDNA	>RC210509 protein sequence
Clone or AA Sequence:	Red=Cloning site Green=Tags(s)

MFWKFDLHTSSHLDTLLEEREDLSLPELLDEEDVLQECKVNRKLLDFLLQPPHLQAMVAWWTQEPPDSGE  
ERLRYKYPSVACEILTSVDPQINDALGADESLLNRLYGFLQSTGSLNPLLASFFSKVMGILINRKTDLV  
SFLRKKDDFVDLLLQHIGTSAIMDLLLRLLTCVERPQLRQDVVNWLNEEKIVQRLIEQIHPSKDENQHSN  
ASQSLCDIIRLSREQMIQVQDSPEPDQLLATLEKQETIEQLLSNMFEQEQSQSIVSGIQVLLTLEPRR  
PRSESVTVNSFFSSVDGQLELLAQALESTVSSVGAHALRPRLSCFHQLLLEPPKLEPLQMTWGMLAPP  
LGNTRLHVVKLLASALSANDAALHELLALDVPNTMLDLFFHYVFNNFLHAQVEGCVSTMSLGGPPDSS  
PETPIQNPVVKHLLQQCRLVERILTSWEENDRVQCAGGPRKGYMGHLTRVAGALVQNTEKGPNAEQLRQL  
LKELPSEQQEQWEAFVSGPLAETNKKNMVDLVNTHHLHSSSDEDDRLKEFNFPPEAVLQQAFMDFQMQR  
MTSAFIDHFGFNDEEFGEQEESVNAPFDKTANITFSLNADDENPNANLLEICYKDRIQQFDDDEEEDEE  
EAQSGSGEDGEDGAWQGSQ LARGARLGQPPGVRSGGSTDESEEEEEDEEEDEEGIGCAARGGATPLSY  
PSPGPQPPGPSWTATFDVPVPTDAPTSRVS GEEELHTGPPAPQGPLSVPQGLPTQSLASPPARDALQLRS  
QDPTPPSAPQEATEGSKVTEPSAPCALVSIQDLQATFHGIRSAPSSSDSATRDPSTVSPASGAHQPPQT  
TEGEKSPEPLGLPQSQAQALTPPIPNNGSAPEGPASPGSQ

TRTRPLEQKLISEEDLAANDILDYKDDDDKV

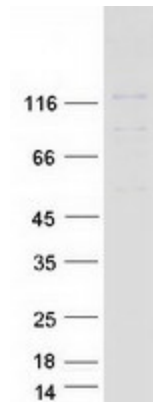
Tag:	C-Myc/DDK
Predicted MW:	96.5 kDa
Concentration:	>0.05 µg/µL as determined by microplate BCA method
Purity:	> 80% as determined by SDS-PAGE and Coomassie blue staining
Buffer:	25 mM Tris-HCl, 100 mM glycine, pH 7.3, 10% glycerol
Preparation:	Recombinant protein was captured through anti-DDK affinity column followed by conventional chromatography steps.



[View online »](#)

<b>Note:</b>	For testing in cell culture applications, please filter before use. Note that you may experience some loss of protein during the filtration process.
<b>Storage:</b>	Store at -80°C.
<b>Stability:</b>	Stable for 12 months from the date of receipt of the product under proper storage and handling conditions. Avoid repeated freeze-thaw cycles.
<b>RefSeq:</b>	<a href="#">NP_055746</a>
<b>Locus ID:</b>	22870
<b>UniProt ID:</b>	<a href="#">Q9UPN7</a>
<b>RefSeq Size:</b>	3654
<b>Cytogenetics:</b>	19q13.42
<b>RefSeq ORF:</b>	2643
<b>Synonyms:</b>	KIAA1115; PP6R1; SAP190; SAPS1
<b>Summary:</b>	Protein phosphatase regulatory subunits, such as SAPS1, modulate the activity of protein phosphatase catalytic subunits by restricting substrate specificity, recruiting substrates, and determining the intracellular localization of the holoenzyme. SAPS1 is a regulatory subunit for the protein phosphatase-6 catalytic subunit (PPP6C; MIM 612725) (Stefansson and Brautigan, 2006 [PubMed 16769727]).[supplied by OMIM, Nov 2010]

### Product images:



Coomassie blue staining of purified PPP6R1 protein (Cat# [TP310509]). The protein was produced from HEK293T cells transfected with PPP6R1 cDNA clone (Cat# [RC210509]) using MegaTran 2.0 (Cat# [TT210002]).