

## Product datasheet for **TP310509L**

### **SAPS1 (PPP6R1) (NM\_014931) Human Recombinant Protein**

#### Product data:

|                       |   |
|-----------------------|---|
| Product Type:         | Recombinant Proteins  |
| Description:          | Recombinant protein of human SAPS domain family, member 1 (SAPS1), 1 mg |
| Species:              | Human   |
| Expression Host:      | HEK293T   |
| Expression cDNA       | >RC210509 protein sequence  |
| Clone or AA Sequence: | Red=Cloning site Green=Tags(s)  |

MFWKFDLHTSSHLDTLLEEREDLSLPELLDEEDVLQECKVNRKLLDFLLQPPHLQAMVAWWTQEPPDSGE  
 ERLRYKYPVACEILTSVDPQINDALGADESLLNRLYGFLQSTGSLNPLLASFFSKVMGILINRKTDLV  
 SFLRKKDDFVDLLLQHIGTSAIMDLLLRLLTCVERPQLRQDVVNWLNEEKIVQRLIEQIHPSKDENQHSN  
 ASQSLCDIIRLSREQMIQVQDSPEPDQLLATLEKQETIEQLLSNMFEGEQSQSIVSGIQVLLTLEPRR  
 PRSESVTVNSFFSSVDGQLELLAQALESTVSSVGAHALRPRLSCFHQLLLEPPKLEPLQMTWGMLAPP  
 LGNTRLHVVKLLASALSANDAALHELLALDVPNTMLDLFFHYVFNNFLHAQVEGCVSTMSLGGPPDSS  
 PETPIQNPVVKHLLQQCRLVERILTSWEENDRVQCAGGPRKGYMGHLTRVAGALVQNTEKGPNAEQLRQL  
 LKELPSEQEQWEAFVSGPLAETNKKNMVDLVNTHHLHSSSDEDDRLKEFNFPPEAVLQQAFMDFQMQR  
 MTSAFIDHFGFNDEEFGEQEESVNAPFDKTANITFSLNADDENPNANLLEICYKDRIQQFDDDEEEDEE  
 EAQSGSGEDGEDGAWQGSQ LARGARLGQPPGVRSGGSTDESEEEEEDEEEDEEGIGCAARGGATPLSY  
 PSPGPQPPGPSWTATFDPVPTDAPTSRVS GEEELHTGPPAPQGPLSVPQGLPTQSLASPPARDALQLRS  
 QDPTPPSAPQEATEGSKVTEPSAPCQALVSIQDLQATFHGIRSAPSSSDSATRDPSTSVPASGAHQPPQT  
 TEGEKSPEPLGLPQSQAQALTPPIPNGSAPEGPASPGSQ

TRTRPLEQKLISEEDLAANDILDYKDDDDKV

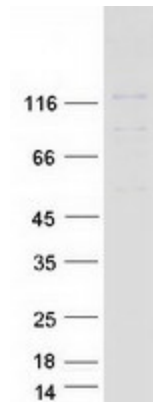
|                |  |
|----------------|--|
| Tag:           | C-Myc/DDK  |
| Predicted MW:  | 96.5 kDa   |
| Concentration: | >0.05 µg/µL as determined by microplate BCA method   |
| Purity:        | > 80% as determined by SDS-PAGE and Coomassie blue staining  |
| Buffer:        | 25 mM Tris-HCl, 100 mM glycine, pH 7.3, 10% glycerol   |
| Preparation:   | Recombinant protein was captured through anti-DDK affinity column followed by conventional chromatography steps. |



[View online »](#)

|                      |  |
|----------------------|--|
| <b>Note:</b>         | For testing in cell culture applications, please filter before use. Note that you may experience some loss of protein during the filtration process.   |
| <b>Storage:</b>      | Store at -80°C.  |
| <b>Stability:</b>    | Stable for 12 months from the date of receipt of the product under proper storage and handling conditions. Avoid repeated freeze-thaw cycles.  |
| <b>RefSeq:</b>       | <a href="#">NP_055746</a>  |
| <b>Locus ID:</b>     | 22870  |
| <b>UniProt ID:</b>   | <a href="#">Q9UPN7</a>   |
| <b>RefSeq Size:</b>  | 3654   |
| <b>Cytogenetics:</b> | 19q13.42   |
| <b>RefSeq ORF:</b>   | 2643   |
| <b>Synonyms:</b>     | KIAA1115; PP6R1; SAP190; SAPS1   |
| <b>Summary:</b>      | Protein phosphatase regulatory subunits, such as SAPS1, modulate the activity of protein phosphatase catalytic subunits by restricting substrate specificity, recruiting substrates, and determining the intracellular localization of the holoenzyme. SAPS1 is a regulatory subunit for the protein phosphatase-6 catalytic subunit (PPP6C; MIM 612725) (Stefansson and Brautigan, 2006 [PubMed 16769727]).[supplied by OMIM, Nov 2010] |

### Product images:



Coomassie blue staining of purified PPP6R1 protein (Cat# [TP310509]). The protein was produced from HEK293T cells transfected with PPP6R1 cDNA clone (Cat# [RC210509]) using MegaTran 2.0 (Cat# [TT210002]).