

Product datasheet for TP310509

SAPS1 (PPP6R1) (NM_014931) Human Recombinant Protein

Product data:

Product Type:	Recombinant Proteins
Description:	Recombinant protein of human SAPS domain family, member 1 (SAPS1), 20 µg
Species:	Human
Expression Host:	HEK293T
Expression cDNA	>RC210509 protein sequence
Clone or AA Sequence:	Red=Cloning site Green=Tags(s)

MFWKFDLHTSSHLDTLLEREDLSLPELLDEEDVLQECKVNRKLLDFLLQPPHLQAMVAWWTQEPPDSGE
ERLRYKYPVACEILTSVDPQINDALGADESLLNRLYGFLQSTGSLNPLLASFVSKVMGILINRKTDLV
SFLRKKDDFVDLLLQHIGTSAIMDLLLRLLTCVERPQLRQDVVNWLNEEKIVQLIEQIHPSKDENVQHSN
ASQSLCDIIRLSREQMIQVQDSPEPDQLLATLEKQETIEQLLSNMFEQEQSQSVIVSGIQVLLTLEPRR
PRSESVTVNSFFSSVDGQLELLAQALESTVSSVGAHALRPRLSCFHQLLLEPPKLEPLQMTWGMLAPP
LGNTRLHVVKLLASALSANDAALHELLALDVPNTMLDLFFHYVFNNFLHAQVEGCVSTMSLGGPPDSS
PETPIQNPVVKHLLQQCRLVERILTSWEENDRVQCAGGPRKGYMGHLTRVAGALVQNTKEGPNAEQLRQL
LKELPSEQQEQWEAFVSGPLAETNKKNMVDLVNTHHLHSSSDEDDRLKEFNFPPEAVLQQAFMDFQMQR
MTSAFIDHFGFNDEEFGEQEESVNAPFDKTANITFSLNADDENPNANLLEICYKDRIQQFDDDEEEDEE
EAQSGSGEDGEDGAWQGSQ LARGARLGQPPGVRSGGSTDESEEEEEDEEEDEEGIGCAARGGATPLSY
PSPGPQPPGPSWTATFDPVPTDAPTSRVS GEEELHTGPPAPQGPLSVPQGLPTQSLASPPARDALQLRS
QDPTPPSAPQEATEGSKVTEPSAPCQALVSIQDLQATFHGIRSAPSSSDSATRDPSTVSPASGAHQPPQT
TEGEKSPEPLGLPQSQAQALTPPIPNGSAPEGPASPGSQ

TRTRPLEQKLISEEDLAANDILDYKDDDDKV

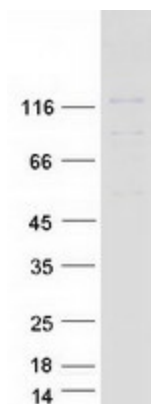
Tag:	C-Myc/DDK
Predicted MW:	96.5 kDa
Concentration:	>0.05 µg/µL as determined by microplate BCA method
Purity:	> 80% as determined by SDS-PAGE and Coomassie blue staining
Buffer:	25 mM Tris-HCl, 100 mM glycine, pH 7.3, 10% glycerol
Preparation:	Recombinant protein was captured through anti-DDK affinity column followed by conventional chromatography steps.



[View online »](#)

Note:	For testing in cell culture applications, please filter before use. Note that you may experience some loss of protein during the filtration process.
Storage:	Store at -80°C.
Stability:	Stable for 12 months from the date of receipt of the product under proper storage and handling conditions. Avoid repeated freeze-thaw cycles.
RefSeq:	NP_055746
Locus ID:	22870
UniProt ID:	Q9UPN7
RefSeq Size:	3654
Cytogenetics:	19q13.42
RefSeq ORF:	2643
Synonyms:	KIAA1115; PP6R1; SAP190; SAPS1
Summary:	Protein phosphatase regulatory subunits, such as SAPS1, modulate the activity of protein phosphatase catalytic subunits by restricting substrate specificity, recruiting substrates, and determining the intracellular localization of the holoenzyme. SAPS1 is a regulatory subunit for the protein phosphatase-6 catalytic subunit (PPP6C; MIM 612725) (Stefansson and Brautigan, 2006 [PubMed 16769727]).[supplied by OMIM, Nov 2010]

Product images:



Coomassie blue staining of purified PPP6R1 protein (Cat# TP310509). The protein was produced from HEK293T cells transfected with PPP6R1 cDNA clone (Cat# [RC210509]) using MegaTran 2.0 (Cat# [TT210002]).