

Product datasheet for **TP310504L**

Alkaline Phosphatase (ALPP) (NM_001632) Human Recombinant Protein

Product data:

Product Type:	Recombinant Proteins
Description:	Recombinant protein of human alkaline phosphatase, placental (Regan isozyme) (ALPP), 1 mg
Species:	Human
Expression Host:	HEK293T
Expression cDNA Clone or AA Sequence:	>RC210504 protein sequence Red =Cloning site Green =Tags(s)
	<p>MLGPCMLLLLLLLGLRLQLSLGIIPVEEENPDFWNREAAEALGAAKQLPAQTAAKNLIIFLGDGMGVST VTAARILKGQKKDKLGPEIPLAMDRFPYVALSKTYNVDKHVPDSGATATAYLCGVKGNFQTIGLSAAARF NQCNTTRGNEVISVMNRAKKAGKSVGVVTTTRVQHASPAGTYAHTVNRNWYSADVPASARQEGCQDIAT QLISNMDIDVILGGGRKYMFRMGTPDPEYPDDYSQGGTRLDGKNLVQEWLAKRQGARYVWNRTELMQASL DPSVTHLMGLFEPGDMKYEIHRDSTLDPSLMEMTEAALRLLSRNPRGFFLFVEGGRIDHGHESRAYRAL TETIMFDDAIERAGQLTSEEDTSLVLTADHSHVFSFGGYPLRGSSIFGLAPGKARDRKAYTVLLYGNGPG YVLKDGARPDVTESESGSPEYRQQSAVPLDEETHAGEDVAVFARGPQAHLVHGVQEQTFAHVMAFAACL EPYTACDLAPPAGTTDAAHPGRSVVPALLPLLAGTLLLLLETATAP</p> <p>TRTRPLEQKLISEEDLAANDILDYKDDDDKV</p>
Tag:	C-Myc/DDK
Predicted MW:	55.5 kDa
Concentration:	>0.05 µg/µL as determined by microplate BCA method
Purity:	> 80% as determined by SDS-PAGE and Coomassie blue staining
Buffer:	25 mM Tris-HCl, 100 mM glycine, pH 7.3, 10% glycerol
Preparation:	Recombinant protein was captured through anti-DDK affinity column followed by conventional chromatography steps.
Note:	For testing in cell culture applications, please filter before use. Note that you may experience some loss of protein during the filtration process.
Storage:	Store at -80°C.
Stability:	Stable for 12 months from the date of receipt of the product under proper storage and handling conditions. Avoid repeated freeze-thaw cycles.



[View online »](#)

RefSeq: [NP_001623](#)

Locus ID: 250

UniProt ID: [P05187](#), [B2R7C7](#)

RefSeq Size: 2883

Cytogenetics: 2q37.1

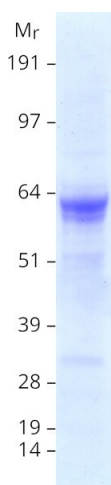
RefSeq ORF: 1605

Synonyms: ALP; ALPI; IAP; PALP; PLAP; PLAP-1

Summary: The protein encoded by this gene is an alkaline phosphatase, a metalloenzyme that catalyzes the hydrolysis of phosphoric acid monoesters. It belongs to a multigene family composed of four alkaline phosphatase isoenzymes. The enzyme functions as a homodimer and has a catalytic site containing one magnesium and two zinc ions, which are required for its enzymatic function. One of the main sources of this enzyme is the liver, and thus, it's one of several indicators of liver injury in different clinical conditions. In pregnant women, this protein is primarily expressed in placental and endometrial tissue, however, strong ectopic expression has been detected in ovarian adenocarcinoma, serous cystadenocarcinoma, and other ovarian cancer cells. [provided by RefSeq, Aug 2020]

Protein Pathways: Folate biosynthesis, Metabolic pathways

Product images:



Coomassie blue staining of purified ALPP protein (Cat# [TP310504]). The protein was produced from HEK293T cells transfected with ALPP cDNA clone (Cat# [RC210504]) using MegaTran 2.0 (Cat# [TT210002]).