

## Product datasheet for **TP310499L**

### VPS26B (NM\_052875) Human Recombinant Protein

#### Product data:

Product Type:	Recombinant Proteins
Description:	Recombinant protein of human vacuolar protein sorting 26 homolog B (S. pombe) (VPS26B), 1 mg
Species:	Human
Expression Host:	HEK293T
Expression cDNA Clone or AA Sequence:	>RC210499 representing NM_052875 Red=Cloning site Green=Tags(s)

MSFFGFGQSVEVEILLNDAESRKRAEHKTEDGKKEKYFLFYDGETVSGKVSLALRNPKNRLEHQGIKIEF  
IGQIELYYDRGNHHEFVSLVKDLARPGEITQSQAQDFEFTHVEKPYESYTGQNVKLRFLRATISRRLND  
VVKEMDIVVHTLSTYPELNSSIKMEVGIEDCLHIEFEYNKSKYHLKDVIVGKIYFLLVRIKIKHMEIDII  
KRETTGTGPNVYHENDTIKYEIMDGAPVRGESIPIRLFLAGYELTPTMRDINKKFSVRYLNLVLIDEE  
ERRYFKQQEVWLWRKGDIVRKSMHQAAIASQRFEGTSSLGEVRTPSQLSDNNCRQ

TRTRPLEQKLISEEDLAANDILDYKDDDDKV

Tag:	C-Myc/DDK
Predicted MW:	39 kDa
Concentration:	>0.05 µg/µL as determined by microplate BCA method
Purity:	> 80% as determined by SDS-PAGE and Coomassie blue staining
Buffer:	25 mM Tris-HCl, 100 mM glycine, pH 7.3, 10% glycerol
Preparation:	Recombinant protein was captured through anti-DDK affinity column followed by conventional chromatography steps.
Note:	For testing in cell culture applications, please filter before use. Note that you may experience some loss of protein during the filtration process.
Storage:	Store at -80°C.
Stability:	Stable for 12 months from the date of receipt of the product under proper storage and handling conditions. Avoid repeated freeze-thaw cycles.
RefSeq:	<a href="#">NP_443107</a>
Locus ID:	112936



[View online »](#)

UniProt ID: [Q4G0F5](#), [A0A024R3L9](#)

RefSeq Size: 3685

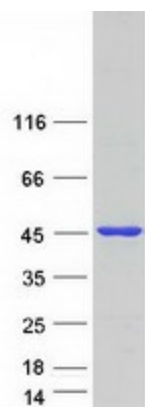
Cytogenetics: 11q25

RefSeq ORF: 1008

Synonyms: Pep8b

**Summary:** Acts as component of the retromer cargo-selective complex (CSC). The CSC is believed to be the core functional component of retromer or respective retromer complex variants acting to prevent missorting of selected transmembrane cargo proteins into the lysosomal degradation pathway. The recruitment of the CSC to the endosomal membrane involves RAB7A and SNX3. The SNX-BAR retromer mediates retrograde transport of cargo proteins from endosomes to the trans-Golgi network (TGN) and is involved in endosome-to-plasma membrane transport for cargo protein recycling. The SNX3-retromer mediates the retrograde transport of WLS distinct from the SNX-BAR retromer pathway. The SNX27-retromer is believed to be involved in endosome-to-plasma membrane trafficking and recycling of a broad spectrum of cargo proteins. The CSC seems to act as recruitment hub for other proteins, such as the WASH complex and TBC1D5. May be involved in retrograde transport of SORT1 but not of IGF2R. Acts redundantly with VSP26A in SNX-27 mediated endocytic recycling of SLC2A1/GLUT1 (By similarity).[UniProtKB/Swiss-Prot Function]

## Product images:



Coomassie blue staining of purified VPS26B protein (Cat# [TP310499]). The protein was produced from HEK293T cells transfected with VPS26B cDNA clone (Cat# [RC210499]) using MegaTran 2.0 (Cat# [TT210002]).