

## Product datasheet for **TP310496**

### **CGRP (CALCB) (NM\_000728) Human Recombinant Protein**

#### **Product data:**

|                                       |  |
|---------------------------------------|--|
| Product Type:                         | Recombinant Proteins   |
| Description:                          | Recombinant protein of human calcitonin-related polypeptide beta (CALCB), 20 µg  |
| Species:                              | Human  |
| Expression Host:                      | HEK293T  |
| Expression cDNA Clone or AA Sequence: | >RC210496 protein sequence<br><b>Red</b> =Cloning site <b>Green</b> =Tags(s)   |
|                                       | MGFRKFSPFLALSILVLYQAGSLQAAPFRSALESSPDPATLSKEDARLLLLAALVQDYVQMKASELKQEQE<br>TQGSSSAAQKRACNTATCVTHRLAGLLSRSGGMVKS NFVPTNVGSKAFGRRRRDLQA                |
|                                       | <b>TRTRPLEQKLISEEDLAANDILDYKDDDDKV</b>   |
| Tag:                                  | C-Myc/DDK  |
| Predicted MW:                         | 13.5 kDa   |
| Concentration:                        | >0.05 µg/µL as determined by microplate BCA method   |
| Purity:                               | > 80% as determined by SDS-PAGE and Coomassie blue staining  |
| Buffer:                               | 25 mM Tris-HCl, 100 mM glycine, pH 7.3, 10% glycerol   |
| Preparation:                          | Recombinant protein was captured through anti-DDK affinity column followed by conventional chromatography steps.                                     |
| Note:                                 | For testing in cell culture applications, please filter before use. Note that you may experience some loss of protein during the filtration process. |
| Storage:                              | Store at -80°C.  |
| Stability:                            | Stable for 12 months from the date of receipt of the product under proper storage and handling conditions. Avoid repeated freeze-thaw cycles.        |
| RefSeq:                               | <a href="#">NP_000719</a>  |
| Locus ID:                             | 797  |
| UniProt ID:                           | <a href="#">P10092</a>   |
| RefSeq Size:                          | 1031   |
| Cytogenetics:                         | 11p15.2  |



[View online »](#)

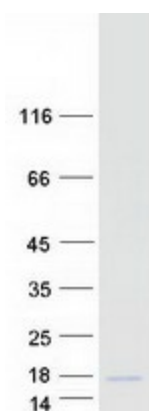
RefSeq ORF: 381

Synonyms: CALC2; CGRP-II; CGRP2

Summary: CGRP induces vasodilation. It dilates a variety of vessels including the coronary, cerebral and systemic vasculature. Its abundance in the CNS also points toward a neurotransmitter or neuromodulator role.[UniProtKB/Swiss-Prot Function]

Protein Families: Druggable Genome, Secreted Protein

### Product images:



Coomassie blue staining of purified CALCB protein (Cat# TP310496). The protein was produced from HEK293T cells transfected with CALCB cDNA clone (Cat# [RC210496]) using MegaTran 2.0 (Cat# [TT210002]).