

Product datasheet for **TP310489M**

Bcl 7A (BCL7A) (NM_001024808) Human Recombinant Protein

Product data:

| | |
|--|---|
| Product Type: | Recombinant Proteins |
| Description: | Recombinant protein of human B-cell CLL/lymphoma 7A (BCL7A), transcript variant 2, 100 µg |
| Species: | Human |
| Expression Host: | HEK293T |
| Expression cDNA Clone or AA Sequence: | >RC210489 protein sequence Red =Cloning site Green =Tags(s) |

MSGRSVRAETRSRAKDDIKRVMAAIEKVRKWEKKWVTVGDTSLRIYKWVPVTEPKVDDKNKKNKKKGKDEK
CGSEVTTPENSSSPGMMMDMHDDNSNQSSIADASPIKQENSSNSSPAPEPNSAVPSDGTEAKVDEAQADGK
EHPGAEDASDEQNSQSSMEHSMNSSEKVDVRQPSGDSGLAAETSAISQDLEGVPPSKMKMKLEASQQNSEEM

TRTRPLEQKLISEEDLAANDILDYKDDDDKV

| | |
|-----------------------|--|
| Tag: | C-Myc/DDK |
| Predicted MW: | 22.6 kDa |
| Concentration: | >0.05 µg/µL as determined by microplate BCA method |
| Purity: | > 80% as determined by SDS-PAGE and Coomassie blue staining |
| Buffer: | 25 mM Tris-HCl, 100 mM glycine, pH 7.3, 10% glycerol |
| Preparation: | Recombinant protein was captured through anti-DDK affinity column followed by conventional chromatography steps. |
| Note: | For testing in cell culture applications, please filter before use. Note that you may experience some loss of protein during the filtration process. |
| Storage: | Store at -80°C. |
| Stability: | Stable for 12 months from the date of receipt of the product under proper storage and handling conditions. Avoid repeated freeze-thaw cycles. |
| RefSeq: | NP_001019979 |
| Locus ID: | 605 |
| UniProt ID: | Q4VC05 |
| RefSeq Size: | 3651 |



[View online »](#)

Cytogenetics: 12q24.31

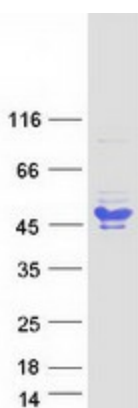
RefSeq ORF: 630

Synonyms: BCL7

Summary: This gene is directly involved, with Myc and IgH, in a three-way gene translocation in a Burkitt lymphoma cell line. As a result of the gene translocation, the N-terminal region of the gene product is disrupted, which is thought to be related to the pathogenesis of a subset of high-grade B cell non-Hodgkin lymphoma. The N-terminal segment involved in the translocation includes the region that shares a strong sequence similarity with those of BCL7B and BCL7C. Two transcript variants encoding different isoforms have been found for this gene. [provided by RefSeq, Jul 2008]

Protein Families: Druggable Genome

Product images:



Coomassie blue staining of purified BCL7A protein (Cat# [TP310489]). The protein was produced from HEK293T cells transfected with BCL7A cDNA clone (Cat# [RC210489]) using MegaTran 2.0 (Cat# [TT210002]).