

Product datasheet for **TP310489L**

Bcl 7A (BCL7A) (NM_001024808) Human Recombinant Protein

Product data:

Product Type: Recombinant Proteins

Description: Recombinant protein of human B-cell CLL/lymphoma 7A (BCL7A), transcript variant 2, 1 mg

Species: Human

Expression Host: HEK293T

Expression cDNA Clone >RC210489 protein sequence

or AA Sequence: **Red**=Cloning site **Green**=Tags(s)

MSGRSVRAETRSRAKDDIKRVMAAIEKVRKWEKKWVTVGDTSLRIYKWVPVTEPKVDDKNKNNKKKGKDEK
CGSEVTTPENSSSPGMMMDMHDDNSNQSSIADASPIKQENSSNSSPAPEPNSAVPSDGTEAKVDEAQADGK
EHPGAEDASDEQNSQSSMEHSMNSSEKVDVRQPSGDSGLAAETSAISQDLEGVPPSKMKMKLEASQQNSEEM

TRTRPLEQKLISEEDLAANDILDYKDDDDKV

Tag: C-Myc/DDK

Predicted MW: 22.6 kDa

Concentration: >0.05 µg/µL as determined by microplate BCA method

Purity: > 80% as determined by SDS-PAGE and Coomassie blue staining

Buffer: 25 mM Tris-HCl, 100 mM glycine, pH 7.3, 10% glycerol

Preparation: Recombinant protein was captured through anti-DDK affinity column followed by conventional chromatography steps.

Note: For testing in cell culture applications, please filter before use. Note that you may experience some loss of protein during the filtration process.

Storage: Store at -80°C.

Stability: Stable for 12 months from the date of receipt of the product under proper storage and handling conditions. Avoid repeated freeze-thaw cycles.

RefSeq: [NP_001019979](#)

Locus ID: 605

UniProt ID: [Q4VC05](#)

RefSeq Size: 3651



[View online »](#)

Cytogenetics: 12q24.31

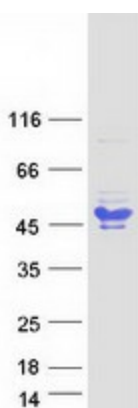
RefSeq ORF: 630

Synonyms: BCL7

Summary: This gene is directly involved, with Myc and IgH, in a three-way gene translocation in a Burkitt lymphoma cell line. As a result of the gene translocation, the N-terminal region of the gene product is disrupted, which is thought to be related to the pathogenesis of a subset of high-grade B cell non-Hodgkin lymphoma. The N-terminal segment involved in the translocation includes the region that shares a strong sequence similarity with those of BCL7B and BCL7C. Two transcript variants encoding different isoforms have been found for this gene. [provided by RefSeq, Jul 2008]

Protein Families: Druggable Genome

Product images:



Coomassie blue staining of purified BCL7A protein (Cat# [TP310489]). The protein was produced from HEK293T cells transfected with BCL7A cDNA clone (Cat# [RC210489]) using MegaTran 2.0 (Cat# [TT210002]).