

Product datasheet for **TP310481L**

Macrophage Inflammatory Protein 1 beta (CCL4) (NM_002984) Human Recombinant Protein

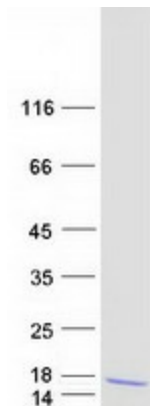
Product data:

Product Type:	Recombinant Proteins
Description:	Recombinant protein of human chemokine (C-C motif) ligand 4 (CCL4), transcript variant 1, 1 mg
Species:	Human
Expression Host:	HEK293T
Expression cDNA Clone or AA Sequence:	>RC210481 protein sequence Red=Cloning site Green=Tags(s) MKLCVTVLSLLMLVA AFCSPALSAPMGSDPPTACCF SYTARKLPRNFVVDYYETSSLCSQPAVWFQTKRS KQVCADPSESWWQEYVYDLELN TRTRPLEQKLISEEDLAANDILDYKDDDDKV
Tag:	C-Myc/DDK
Predicted MW:	10 kDa
Concentration:	>0.05 µg/µL as determined by microplate BCA method
Purity:	> 80% as determined by SDS-PAGE and Coomassie blue staining
Buffer:	25 mM Tris-HCl, 100 mM glycine, pH 7.3, 10% glycerol
Preparation:	Recombinant protein was captured through anti-DDK affinity column followed by conventional chromatography steps.
Note:	For testing in cell culture applications, please filter before use. Note that you may experience some loss of protein during the filtration process.
Storage:	Store at -80°C.
Stability:	Stable for 12 months from the date of receipt of the product under proper storage and handling conditions. Avoid repeated freeze-thaw cycles.
RefSeq:	NP_002975
Locus ID:	6351
UniProt ID:	P13236
RefSeq Size:	667



[View online »](#)

Cytogenetics:	17q12
RefSeq ORF:	276
Synonyms:	ACT2; AT744.1; G-26; HC21; LAG-1; LAG1; MIP-1-beta; MIP1B; MIP1B1; SCYA2; SCYA4
Summary:	The protein encoded by this gene is a mitogen-inducible monokine and is one of the major HIV-suppressive factors produced by CD8+ T-cells. The encoded protein is secreted and has chemokinetic and inflammatory functions. [provided by RefSeq, Dec 2012]
Protein Families:	Druggable Genome, Secreted Protein, Transmembrane
Protein Pathways:	Chemokine signaling pathway, Cytokine-cytokine receptor interaction, Cytosolic DNA-sensing pathway, Toll-like receptor signaling pathway

Product images:

Coomassie blue staining of purified CCL4 protein (Cat# [TP310481]). The protein was produced from HEK293T cells transfected with CCL4 cDNA clone (Cat# [RC210481]) using MegaTran 2.0 (Cat# [TT210002]).