

## Product datasheet for **TP310477L**

### **NUDT15 (NM\_018283) Human Recombinant Protein**

#### **Product data:**

Product Type:	Recombinant Proteins
Description:	Recombinant protein of human nudix (nucleoside diphosphate linked moiety X)-type motif 15 (NUDT15), 1 mg
Species:	Human
Expression Host:	HEK293T
Expression cDNA Clone or AA Sequence:	>RC210477 representing NM_018283 <b>Red</b> =Cloning site <b>Green</b> =Tags(s)

MTASAQPRGRRPGVGVGWVTSCKHPRCVLLGKRKGSVGAGSFQLPGGHLEFGETWEECAQRETWEEAAL  
HLKNVHFASVVNSFIEKENYHYVTILMKGEVDVTHDSEPKNVEPEKNESWEWVPWEELPPLDQLFWGLRC  
LKEQGYDPFKEDLNHLVGYKGNHL

**TRTRPLEQKLISEEDLAANDILDYKDDDDKV**

Tag:	C-Myc/DDK
Predicted MW:	18.4 kDa
Concentration:	>0.05 µg/µL as determined by microplate BCA method
Purity:	> 80% as determined by SDS-PAGE and Coomassie blue staining
Buffer:	25 mM Tris-HCl, 100 mM glycine, pH 7.3, 10% glycerol
Preparation:	Recombinant protein was captured through anti-DDK affinity column followed by conventional chromatography steps.
Note:	For testing in cell culture applications, please filter before use. Note that you may experience some loss of protein during the filtration process.
Storage:	Store at -80°C.
Stability:	Stable for 12 months from the date of receipt of the product under proper storage and handling conditions. Avoid repeated freeze-thaw cycles.
RefSeq:	<a href="#">NP_060753</a>
Locus ID:	55270
UniProt ID:	<a href="#">Q9NV35</a>



[View online »](#)

RefSeq Size: 2022

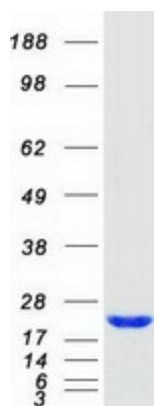
Cytogenetics: 13q14.2

RefSeq ORF: 492

Synonyms: MTH2; NUDT15D

**Summary:** This gene encodes an enzyme that belongs to the Nudix hydrolase superfamily. Members of this superfamily catalyze the hydrolysis of nucleoside diphosphates, including substrates like 8-oxo-dGTP, which are a result of oxidative damage, and can induce base mispairing during DNA replication, causing transversions. The encoded enzyme is a negative regulator of thiopurine activation and toxicity. Mutations in this gene result in poor metabolism of thiopurines, and are associated with thiopurine-induced early leukopenia. Multiple pseudogenes of this gene have been identified. [provided by RefSeq, Apr 2016]

### Product images:



Coomassie blue staining of purified NUDT15 protein (Cat# [TP310477]). The protein was produced from HEK293T cells transfected with NUDT15 cDNA clone (Cat# [RC210477]) using MegaTran 2.0 (Cat# [TT210002]).