

## Product datasheet for **TP310452**

### Proteasome subunit beta type 2 (PSMB2) (NM\_002794) Human Recombinant Protein

#### Product data:

|                                       |  |
|---------------------------------------|--|
| Product Type:                         | Recombinant Proteins   |
| Description:                          | Recombinant protein of human proteasome (prosome, macropain) subunit, beta type, 2 (PSMB2), 20 µg  |
| Species:                              | Human  |
| Expression Host:                      | HEK293T  |
| Expression cDNA Clone or AA Sequence: | >RC210452 protein sequence<br><b>Red</b> =Cloning site <b>Green</b> =Tags(s)   |
|                                       | MEYLIGIQGPDYVLVASDRVAASNIVQMKDDHDKMFKMSEKILLLCVGEAGDTVQFAEYIQKNVQLYKMR<br>NGYELSPTAAANFTRRNLDCLRSRTPYHVNLLLAGYDEHEGPALYYMDYLAALAKAPFAAHGYGAFLL<br>SILDRYTPTISRERAVELLRKCLEELQKRFILNLPTFSVRIIDKNGIHDLDNISFPKQGS |
|                                       | <b>TRTRPLEQKLISEEDLAANDILDYKDDDDKV</b>   |
| Tag:                                  | C-Myc/DDK  |
| Predicted MW:                         | 22.7 kDa   |
| Concentration:                        | >0.05 µg/µL as determined by microplate BCA method   |
| Purity:                               | > 80% as determined by SDS-PAGE and Coomassie blue staining  |
| Buffer:                               | 25 mM Tris-HCl, 100 mM glycine, pH 7.3, 10% glycerol   |
| Preparation:                          | Recombinant protein was captured through anti-DDK affinity column followed by conventional chromatography steps.   |
| Note:                                 | For testing in cell culture applications, please filter before use. Note that you may experience some loss of protein during the filtration process.   |
| Storage:                              | Store at -80°C.  |
| Stability:                            | Stable for 12 months from the date of receipt of the product under proper storage and handling conditions. Avoid repeated freeze-thaw cycles.  |
| RefSeq:                               | <a href="#">NP_002785</a>  |
| Locus ID:                             | 5690   |
| UniProt ID:                           | <a href="#">P49721</a>   |



[View online »](#)

RefSeq Size: 4759

Cytogenetics: 1p34.3

RefSeq ORF: 603

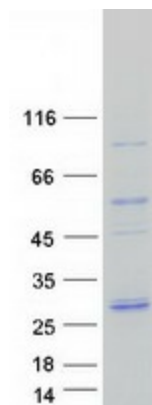
Synonyms: HC7-I

**Summary:** The proteasome is a multicatalytic proteinase complex with a highly ordered ring-shaped 20S core structure. The core structure is composed of 4 rings of 28 non-identical subunits; 2 rings are composed of 7 alpha subunits and 2 rings are composed of 7 beta subunits. Proteasomes are distributed throughout eukaryotic cells at a high concentration and cleave peptides in an ATP/ubiquitin-dependent process in a non-lysosomal pathway. An essential function of a modified proteasome, the immunoproteasome, is the processing of class I MHC peptides. This gene encodes a member of the proteasome B-type family, also known as the T1B family, that is a 20S core beta subunit. Multiple alternatively spliced transcript variants encoding distinct isoforms have been found for this gene. [provided by RefSeq, Dec 2010]

**Protein Families:** Druggable Genome, Protease

**Protein Pathways:** Proteasome

### Product images:



Coomassie blue staining of purified PSMB2 protein (Cat# TP310452). The protein was produced from HEK293T cells transfected with PSMB2 cDNA clone (Cat# [RC210452]) using MegaTran 2.0 (Cat# [TT210002]).