

## Product datasheet for **TP310438M**

### Protein kinase Y linked (PRKY) (NM\_002760) Human Recombinant Protein

#### Product data:

Product Type:	Recombinant Proteins
Description:	Recombinant protein of human protein kinase, Y-linked (PRKY), 100 µg
Species:	Human
Expression Host:	HEK293T
Expression cDNA Clone or AA Sequence:	>RC210438 protein sequence <b>Red</b> =Cloning site <b>Green</b> =Tags(s)
	 MEAPGPAQAAAAESNSREVTEDAADWAPALCPSPEARSPEAPAYRLQDCDALVTMGTGTGFRVHLVKEKT AKHFFALKVMSIPDVIRRKQEQHVHNEKSVLKEVSHPFLLRFLFTWHEERFLYMLMEYVPGGELFSYLRN RGHFSSTTGLFYSAEIIICAIEYLHSKEIVYRDLKPENILLDRDGHKLTDFGFAKKLVDRWTWLCGTPEY LAPEVIQSKGHGRAVDWWALGILIFEMLSGFPPFFDDNPFGIYQKILAGKLYFPRHLDFHVKTGRMM  <b>TRTRPLEQKLISEEDLAANDILDYKDDDDKV</b>
Tag:	C-Myc/DDK
Predicted MW:	31.5 kDa
Concentration:	>0.05 µg/µL as determined by microplate BCA method
Purity:	> 80% as determined by SDS-PAGE and Coomassie blue staining
Buffer:	25 mM Tris-HCl, 100 mM glycine, pH 7.3, 10% glycerol
Preparation:	Recombinant protein was captured through anti-DDK affinity column followed by conventional chromatography steps.
Note:	For testing in cell culture applications, please filter before use. Note that you may experience some loss of protein during the filtration process.
Storage:	Store at -80°C.
Stability:	Stable for 12 months from the date of receipt of the product under proper storage and handling conditions. Avoid repeated freeze-thaw cycles.
RefSeq:	<u><a href="#">NP_002751</a></u>
Locus ID:	5616
UniProt ID:	<u><a href="#">Q43930</a></u>



[View online »](#)

RefSeq Size: 7216

Cytogenetics: Yp11.2

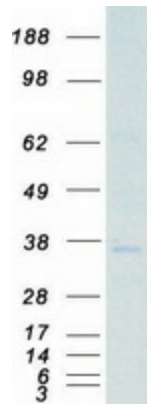
RefSeq ORF: 831

Synonyms: OTTHUMP00000033227; protein kinase, Y-linked

**Summary:** This gene is similar to the protein kinase, X-linked gene in the pseudoautosomal region of the X chromosome. The gene is classified as a transcribed pseudogene because it has lost a coding exon that results in all transcripts being candidates for nonsense-mediated decay (NMD) and unlikely to express a protein. Abnormal recombination between this gene and a related gene on chromosome X is a frequent cause of XX males and XY females. [provided by RefSeq, Jul 2010]

**Protein Families:** Druggable Genome, Protein Kinase

### Product images:



Coomassie blue staining of purified PRKY protein (Cat# [TP310438]). The protein was produced from HEK293T cells transfected with PRKY cDNA clone (Cat# [RC210438]) using MegaTran 2.0 (Cat# [TT210002]).