

## Product datasheet for **TP310438L**

### Protein kinase Y linked (PRKY) (NM\_002760) Human Recombinant Protein

#### Product data:

**Product Type:** Recombinant Proteins

**Description:** Recombinant protein of human protein kinase, Y-linked (PRKY), 1 mg

**Species:** Human

**Expression Host:** HEK293T

**Expression cDNA Clone or AA Sequence:** >RC210438 protein sequence  
**Red**=Cloning site **Green**=Tags(s)

MEAPGPAQAAAAESNSREVTEDAADWAPALCPSPEARSPEAPAYRLQDCDALVTMGTGTGFRVHLVKEKT  
AKHFFALKVMSIPDVIRRKQEQHVHNEKSVLKEVSHPFLLRFLFTWHEERFLYMLMEYVPGGELFSYLRN  
RGHFSSTTGLFYSAEIIICAEYLSKEIVYRDLKPENILLDRDGHKLTDFGFAKKLVDRWTWLCGTPEY  
LAPEVIQSKGHGRAVDWWALGILIFEMLSGFPPFFDDNPFGIYQKILAGKLYFPRHLDFHVKTGRMM

**TRTRPLEQLISEEDLAANDILDYKDDDDKV**

**Tag:** C-Myc/DDK

**Predicted MW:** 31.5 kDa

**Concentration:** >0.05 µg/µL as determined by microplate BCA method

**Purity:** > 80% as determined by SDS-PAGE and Coomassie blue staining

**Buffer:** 25 mM Tris-HCl, 100 mM glycine, pH 7.3, 10% glycerol

**Preparation:** Recombinant protein was captured through anti-DDK affinity column followed by conventional chromatography steps.

**Note:** For testing in cell culture applications, please filter before use. Note that you may experience some loss of protein during the filtration process.

**Storage:** Store at -80°C.

**Stability:** Stable for 12 months from the date of receipt of the product under proper storage and handling conditions. Avoid repeated freeze-thaw cycles.

**RefSeq:** [NP\\_002751](#)

**Locus ID:** 5616

**UniProt ID:** [O43930](#)



[View online »](#)

RefSeq Size: 7216

Cytogenetics: Yp11.2

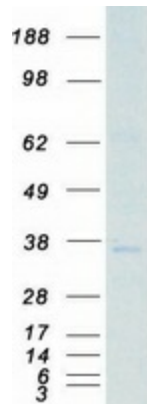
RefSeq ORF: 831

Synonyms: OTTHUMP00000033227; protein kinase, Y-linked

**Summary:** This gene is similar to the protein kinase, X-linked gene in the pseudoautosomal region of the X chromosome. The gene is classified as a transcribed pseudogene because it has lost a coding exon that results in all transcripts being candidates for nonsense-mediated decay (NMD) and unlikely to express a protein. Abnormal recombination between this gene and a related gene on chromosome X is a frequent cause of XX males and XY females. [provided by RefSeq, Jul 2010]

**Protein Families:** Druggable Genome, Protein Kinase

### Product images:



Coomassie blue staining of purified PRKY protein (Cat# [TP310438]). The protein was produced from HEK293T cells transfected with PRKY cDNA clone (Cat# [RC210438]) using MegaTran 2.0 (Cat# [TT210002]).