

Product datasheet for **TP310438**

Protein kinase Y linked (PRKY) (NM_002760) Human Recombinant Protein

Product data:

Product Type: Recombinant Proteins

Description: Recombinant protein of human protein kinase, Y-linked (PRKY), 20 µg

Species: Human

Expression Host: HEK293T

Expression cDNA Clone
or AA Sequence: >RC210438 protein sequence
Red=Cloning site **Green**=Tags(s)

MEAPGPAQAAAAESNSREVTEDAADWAPALCPSPEARSPEAPAYRLQDCDALVTMGTGTGFRVHLVKEKT
AKHFFALKVMSIPDVIRRKQEQHVHNEKSVLKEVSHPFLLRFLFTWHEERFLYMLMEYVPGGELFSYLRN
RGHFSSTTGLFYSAEIIICAEYLSKEIVYRDLKPENILLDRDGHKLTDFGFAKKLVDRWTWLCGTPEY
LAPEVIQSKGHGRAVDWWALGILIFEMLSGFPPFFDDNPFGIYQKILAGKLYFPRHLDFHVKTGRMM

TRTRPLEQLISEEDLAANDILDYKDDDDKV

Tag: C-Myc/DDK

Predicted MW: 31.5 kDa

Concentration: >0.05 µg/µL as determined by microplate BCA method

Purity: > 80% as determined by SDS-PAGE and Coomassie blue staining

Buffer: 25 mM Tris-HCl, 100 mM glycine, pH 7.3, 10% glycerol

Preparation: Recombinant protein was captured through anti-DDK affinity column followed by conventional chromatography steps.

Note: For testing in cell culture applications, please filter before use. Note that you may experience some loss of protein during the filtration process.

Storage: Store at -80°C.

Stability: Stable for 12 months from the date of receipt of the product under proper storage and handling conditions. Avoid repeated freeze-thaw cycles.

RefSeq: [NP_002751](#)

Locus ID: 5616

UniProt ID: [O43930](#)



[View online >](#)

RefSeq Size: 7216

Cytogenetics: Yp11.2

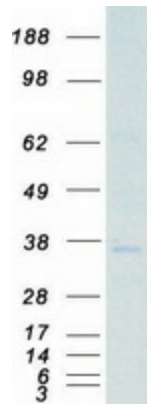
RefSeq ORF: 831

Synonyms: OTTHUMP00000033227; protein kinase, Y-linked

Summary: This gene is similar to the protein kinase, X-linked gene in the pseudoautosomal region of the X chromosome. The gene is classified as a transcribed pseudogene because it has lost a coding exon that results in all transcripts being candidates for nonsense-mediated decay (NMD) and unlikely to express a protein. Abnormal recombination between this gene and a related gene on chromosome X is a frequent cause of XX males and XY females. [provided by RefSeq, Jul 2010]

Protein Families: Druggable Genome, Protein Kinase

Product images:



Coomassie blue staining of purified PRKY protein (Cat# TP310438). The protein was produced from HEK293T cells transfected with PRKY cDNA clone (Cat# [RC210438]) using MegaTran 2.0 (Cat# [TT210002]).