

## Product datasheet for **TP310437M**

### CD226 (NM\_006566) Human Recombinant Protein

#### Product data:

**Product Type:** Recombinant Proteins

**Description:** Recombinant protein of human CD226 molecule (CD226), 100 µg

**Species:** Human

**Expression Host:** HEK293T

**Expression cDNA Clone or AA Sequence:** >RC210437 protein sequence  
**Red**=Cloning site **Green**=Tags(s)

MDYPTLLLALLHVYRALCEEVLWHTSVPFPAENMSLECVYPSMGILTQVEWFKIGTQQDSIAIFSPTHGMV  
IRKPYAERVYFLNSTMASNNMTLFFRNAEEDDVGYYSCSLYTPQGTWQKVIQVWQSDSFEAAVPSNSHI  
VSEPGKNVTLTCQPQMTWPVQAVRWEKIQPRQIDLLTYCNLVHGRNFTSKFPRQIVSNCSHGRWSVIVIP  
DVTVSDSGLYRCYLQASAGENETFVMRLTVAEGKTDNQYTLFVAGGTVLLLLFVISITTIIVIFLNRRRR  
RERRDLFTESWDTQKAPNNYRSPITGQPTNQSMDDTREDIYVNYPTFSRRPKTRV

**TR**TRPLEQKLISEEDLAANDILDYKDDDDKV

**Tag:** C-Myc/DDK

**Predicted MW:** 36.5 kDa

**Concentration:** >0.05 µg/µL as determined by microplate BCA method

**Purity:** > 80% as determined by SDS-PAGE and Coomassie blue staining

**Buffer:** 25 mM Tris-HCl, 100 mM glycine, pH 7.3, 10% glycerol

**Preparation:** Recombinant protein was captured through anti-DDK affinity column followed by conventional chromatography steps.

**Note:** For testing in cell culture applications, please filter before use. Note that you may experience some loss of protein during the filtration process.

**Storage:** Store at -80°C.

**Stability:** Stable for 12 months from the date of receipt of the product under proper storage and handling conditions. Avoid repeated freeze-thaw cycles.

**RefSeq:** [NP\\_006557](#)

**Locus ID:** 10666



[View online »](#)

UniProt ID: [Q15762](#)

RefSeq Size: 2664

Cytogenetics: 18q22.2

RefSeq ORF: 1008

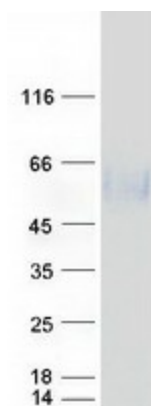
Synonyms: DNAM-1; DNAM1; PTA1; TLISA1

**Summary:** This gene encodes a glycoprotein expressed on the surface of NK cells, platelets, monocytes and a subset of T cells. It is a member of the Ig-superfamily containing 2 Ig-like domains of the V-set. The protein mediates cellular adhesion of platelets and megakaryocytic cells to vascular endothelial cells. The protein also plays a role in megakaryocytic cell maturation. Alternative splicing results in multiple transcript variants. [provided by RefSeq, Jan 2015]

**Protein Families:** Druggable Genome, Transmembrane

**Protein Pathways:** Cell adhesion molecules (CAMs)

### Product images:



Coomassie blue staining of purified CD226 protein (Cat# [TP310437]). The protein was produced from HEK293T cells transfected with CD226 cDNA clone (Cat# [RC210437]) using MegaTran 2.0 (Cat# [TT210002]).