

Product datasheet for TP310437L

CD226 (NM_006566) Human Recombinant Protein

Product data:

Product Type:	Recombinant Proteins
Description:	Recombinant protein of human CD226 molecule (CD226), 1 mg
Species:	Human
Expression Host:	HEK293T
Expression cDNA Clone or AA Sequence:	>RC210437 protein sequence Red =Cloning site Green =Tags(s)

MDYPTLLLALLHVYRALCEEVLWHTSVPFPAENMSLECVYPSMGILTQVEWFKIGTQQDSIAIFSPTHGMV
IRKPYAERVYFLNSTMASNNMTLFFRNASIEDDVGYYSCSLYTPQGTWQKVIQVWQSDSFEAAVPSNSHI
VSEPGKNVTLTCQPQMTWPVQAVRWEKIQPRQIDLLTYCNLVHGRNFTSKFPRQIVSNCSHGRWSVIVIP
DVTVSDSGLYRCYLQASAGENETFMRLTVAEGKTDNQYTLFVAGGTVLLLLFVISITTIIVIFLNRRRR
RERRDLFTESWDTQKAPNNYRSPITGQPTNQSMDDTREDIYVNYPTFSRRPKTRV

TRTRPLEQKLISEEDLAANDILDYKDDDDKV

Tag:	C-Myc/DDK
Predicted MW:	36.5 kDa
Concentration:	>0.05 µg/µL as determined by microplate BCA method
Purity:	> 80% as determined by SDS-PAGE and Coomassie blue staining
Buffer:	25 mM Tris-HCl, 100 mM glycine, pH 7.3, 10% glycerol
Preparation:	Recombinant protein was captured through anti-DDK affinity column followed by conventional chromatography steps.
Note:	For testing in cell culture applications, please filter before use. Note that you may experience some loss of protein during the filtration process.
Storage:	Store at -80°C.
Stability:	Stable for 12 months from the date of receipt of the product under proper storage and handling conditions. Avoid repeated freeze-thaw cycles.
RefSeq:	NP_006557
Locus ID:	10666



[View online »](#)

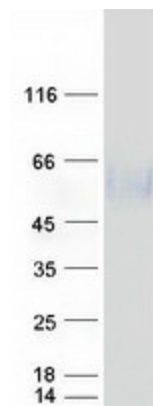
UniProt ID: [Q15762](#)
RefSeq Size: 2664
Cytogenetics: 18q22.2
RefSeq ORF: 1008
Synonyms: DNAM-1; DNAM1; PTA1; TLISA1

Summary: This gene encodes a glycoprotein expressed on the surface of NK cells, platelets, monocytes and a subset of T cells. It is a member of the Ig-superfamily containing 2 Ig-like domains of the V-set. The protein mediates cellular adhesion of platelets and megakaryocytic cells to vascular endothelial cells. The protein also plays a role in megakaryocytic cell maturation. Alternative splicing results in multiple transcript variants. [provided by RefSeq, Jan 2015]

Protein Families: Druggable Genome, Transmembrane

Protein Pathways: Cell adhesion molecules (CAMs)

Product images:



Coomassie blue staining of purified CD226 protein (Cat# [TP310437]). The protein was produced from HEK293T cells transfected with CD226 cDNA clone (Cat# [RC210437]) using MegaTran 2.0 (Cat# [TT210002]).